

Enable Matrix 500 Serial Console

Step 1: Matrix 500 serial console port (ttyS0) shares three data pins with P3 (RS-232 port ttyS3).

ttyS0. TxD <=> ttyS3. RTS
 ttyS0. RxD <=> ttyS3. CTS
 ttyS0.GND <=> ttyS3. GND

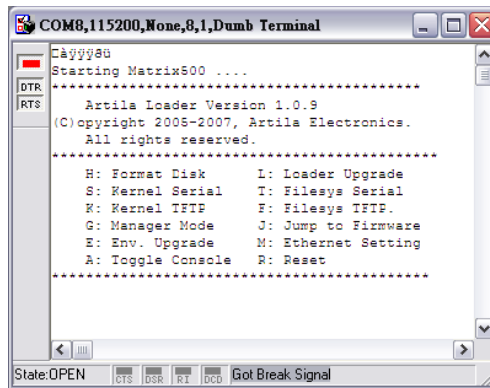
Port 3	
Pin	RS-232
1	
2	TXD
3	GND
4	
5	
6	
7	RXD
8	

Therefore, to access the serial console port, user needs to prepare a special cable adaptor to convert the P3 signal to serial console signal as above.

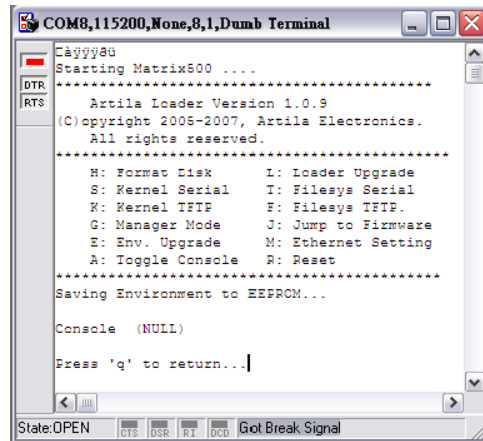
Step 2: Once the serial console (ttyS0) are connected correctly to your PC, you need to use a terminal software such as hyper terminal of Microsoft and the serial port setting as 115200,N,8,1 and no flow control. Terminal type is VT100.

Step 3: Power on Matrix 500 then you will see the message from your terminal software as follow:

Once “Starting Matrix 500” appears, please keep typing “@@@” to trigger the serial load program. Then you will see the Artila loader menu appear. If you miss the trigger procedure, please reset the Matrix 500 and repeat step 3 again.



Step 4: Now you can type “A” to enable the serial console function. Once you see the console is enable as follow, Press “q” to return to main menu of console. Then please type ”R” to reboot the system.



Step 5: Once you complete system debug, please remember to disable the serial console using the Toggle Console item as above.

