

# IDS-5011-WG

Industrial 1-port RS232/422/485 to 802.11 b/g WLAN and 1-port 10/100TX Device Server

## Highlights

- High Speed Air Connectivity: WLAN interface support up to 54Mbps link speed
- Highly Security Capability: WEP/WPA/WPA2/TKIP supported
- NAT-pass through: User can manage IDS-5011-WG through NAT router
- Redundant Power Inputs: 12~48VDC on power jack and terminal block
- Redundant multiple host devices: 5 simultaneous in Virtual COM, TCP Server, TCP Client mode, UDP
- Secured Management by HTTPS and SSH
- Versatile Modes: Virtual Com, Serial Tunnel, TCP Server, TCP Client, UDP
- Event Warning by Syslog, Email, SNMP trap, and Beeper
- Various Windows O.S. supported: Windows NT/2000/ XP/ 2003/VISTA 32-bit



## Features

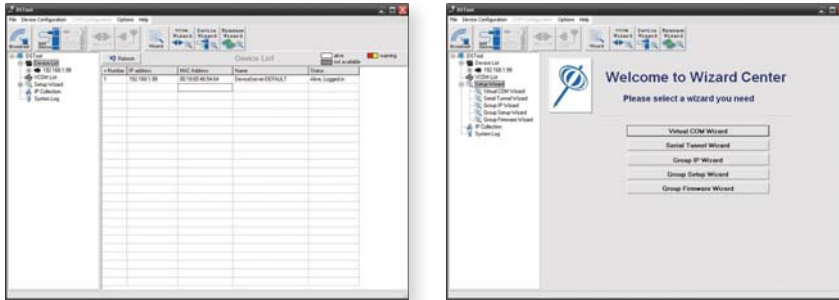
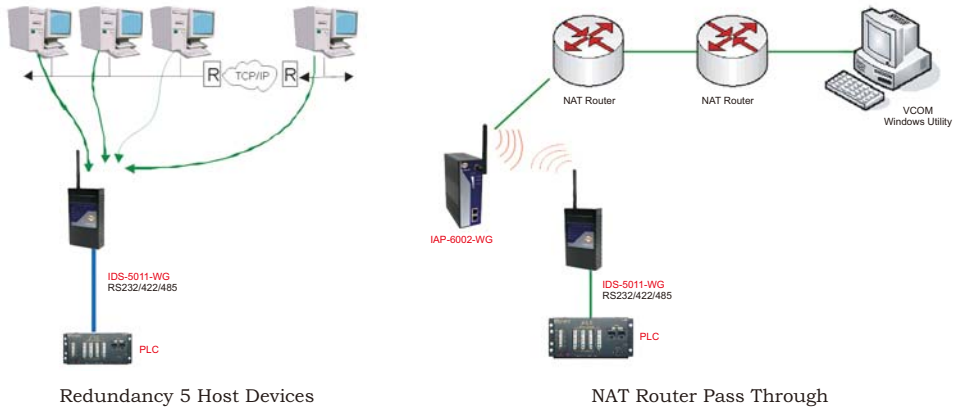
- High Speed with a maximum link speed of 54Mbps With IEEE802.11b/g dual mode capability
- High Security Capability with WEP, WPA, WPA2, and TKIP
- Redundant 5 multiple host devices supported to protect your industrial network
- Versatile modes & event alarm by e-mail
- HTTPs & SSH protocol supported for secured management
- NAT router pass through
- IP table to prevent access from unauthorized IP address
- Configurable by Web-based and Windows utility (**DS-Tool**)
- Dual redundant DC power inputs of terminal block and power jack
- Rigid IP-30 housing design
- DIN-Rail and panel mounting enabled

## Introduction

IDS-5011-WG is an innovative 1 port RS232/422/485 to 802.11b/g WLAN and 1 port LAN device server. Users are able to configure IDS-5011-WG by DS-Tool via LAN port or WLAN interface, but not simultaneously. Once LAN port is activated, WLAN interface will enter standby mode to minimize power consumption. Secondly, IDS-5011-WG can simultaneously transfer data into 5 host PCs. This feature can assure all critical data that saved in different host PCs to avoid Ethernet break or host PCs failure. Thirdly, IDS-5011-WG provides dual redundant power inputs both on DC power jack and terminal block. IDS-5011-WG also provides NAT pass through function so that users are able to manage IDS-5011-WG inside or outside NAT router. It is easy for different IP domain users to use the Switch. Therefore, IDS-5011-WG is one of the best communication solutions for wireless application of serial devices

## DS-Tool

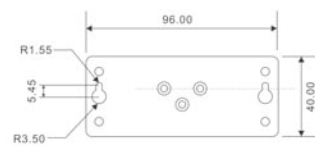
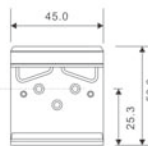
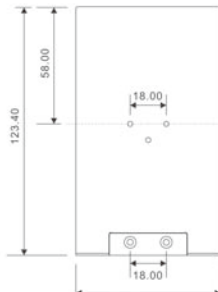
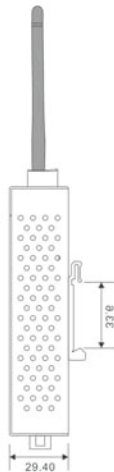
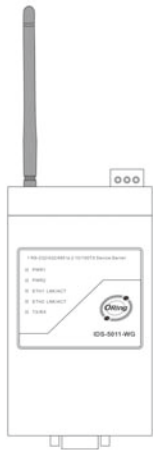
In practical operation of serial device servers, Windows utility (DS-Tool) is supported. This utility is very helpful for you to manage and monitor all of industrial device servers on the industrial network.



Monitoring and Configuration interface

## Dimension

(Unit=mm)



## Specifications

ORing Device Server Model	IDS-5011-WG
<b>Physical Ports</b>	
10/100Base-T(X) Ports in RJ45 Auto MDI/MDIX	1
<b>WLAN Feature</b>	
WLAN Standard	IEEE 802.11b/g
Operating Mode	Client mode
Antenna Connector	Reverse SMA
Radio Frequency Type	DSSS
Modulation	IEEE802.11b: CCK, DQPSK, DBPSK IEEE802.11g: OFDM with BPSK, QPSK, 16QAM, 64QAM
Frequency	America/FCC: 2.412~2.462 GHz (11 channels) Europe CE/ETSI: 2.412~2.472 GHz (13 channels)
Transmission Rate	IEEE802.11b: 1/ 2/ 5.5/ 11 Mbps IEEE802.11g: 6/ 9/ 12/ 18/ 24/ 36/ 48/ 54 Mbps
Transmit Power	IEEE802.11b/g: 16dBm
Receiver Sensitivity	-81dBm @ 11Mbps, PER< 8%; -64dBm @ 54Mbps, PER< 10%
Encryption Security	WEP: (64-bit ,128-bit key supported) WPA: WPA2 : 802.11i(WEP and AES encryption) PSK (256-bit key pre-shared key supported) TKIP encryption
<b>Serial Ports</b>	
Connector	DB9 x 1
Operation Mode	RS232 / RS422 / 4(2)-Wire RS485. Which can be configured by DS-Tool
Serial Baud Rate	110 bps to 230.4 Kbps
Data Bits	5, 6, 7, 8
Parity	odd, even, none, mark, space
Stop Bits	1, 1.5, 2
RS-232	TxD, RxD, RTS, CTS, DTR, DSR, DCD, RI, GND
RS-422	Tx+,Tx-, Rx+, Rx-,GND
RS-485 (4-wire)	Tx+,Tx-, Rx+, Rx-,GND
RS-485 (2-wire)	Data+, Data-,GND
Flow Control	XON/XOFF, RTS/CTS, DTR/DSR
<b>LED indicators</b>	
Power indicator	PWR 1(2) / Ready: Red On: Power is on and booting up. Red Blinking: Indicates an IP conflict, or DHCP or BOOTP server did not respond properly. Green On: Power is on and functioning Normally. Green Blinking: Located by Administrator.
10/100TX RJ45 port indicator	Green for port Link/Act at 100Mbps. Yellow for port Link/Act at 10Mbps.
WLAN indicator	WLAN Link /ACT: Green: Link
Serial TX / RX LEDs:	Red: Serial port is receiving data Green: Serial port is transmitting data
<b>Power</b>	
Redundant Input power	Dual DC inputs. 12-48VDC on 3-pin terminal block and power jack
Power consumption (Typ.)	5 watts
Overload current protection	Present
Reverse polarity protection	Present on terminal block

Physical Characteristic	
Enclosure	IP-30
Dimension (W x D x H)	72(W)x125(D)x31(H) mm (2.83x4.92x1.22 inch.)
Weight (g)	346 g
Environmental	
Storage Temperature	-40 to 85°C(-40 to 185°F)
Operating Temperature	-10 to 55°C (14 to 131°F)
Operating Humidity	5% to 95% Non-condensing
Regulatory approvals	
EMI	FCC Part 15, CISPR (EN55022) class A
EMS	EN61000-4-2 (ESD), EN61000-4-3 (RS), EN61000-4-4 (EFT), EN61000-4-5 (Surge), EN61000-4-6 (CS), EN61000-4-8, EN61000-4-11
Shock	IEC60068-2-27
Free Fall	IEC60068-2-32
Vibration	IEC60068-2-6
Safety	EN60950
Warranty	3 years

### Ordering Information

**IDS-50 A B - CC**

Code Definition	Serial Port Number	Ethernet Port Number	WLAN Identification
<b>Option</b>	- 1: 1 port	- 1: 1 port	- <b>WG</b> : IEEE802.11 b/g mode

Available Model	Model Name	Description
	IDS-5011-WG	Industrial 1-port RS232/422/485 to 802.11 b/g WLAN and 1-port 10/100TX Device Server