



### H/W Specifications

#### Network Interface

- Type: 1 x 10/100Mbps, RJ45 connector
- Protection: 1.5KV Magnetic isolation
- Protocol: Modbus / TCP, UDP, HTTP, DHCP

#### Isolation Analog Input

- No. of Channels: 8
- Input Type: Differential input
- Input Mode: Voltage / Current
- Resolution: 16-bit
- Input Range:
  - Unipolar: 0~150mV, 0~500mV, 0~1V, 0~5V, 0~10V
  - Bipolar: +/-150mV, +/-500mV, +/-1V, +/- 5V, +/-10V
  - Current: 0~20mA
- Input Impedance: 20M Ohm (voltage), 120 Ohm (current)
- Accuracy: +/-1% FSR
- Isolation: 1500VDC

#### Relay Output

- No. of Channels: 1
- Contact Rating: 30VDC@1A or 125VAC@0.5A

#### Mechanical

- Power: 9~48VDC terminal block
- Protection: Auto polarity and surge protect
- Dimensions (W x H x D): 78 x 108 x 25mm

#### Front View



### Features

- Remote analog input module with web access AJAX and Modbus / TCP
- 1 x 10/100Mbps Ethernet port
- 8 x 16-bit A/D
- Isolation up to 2500Vrms
- 1 x relay output
- Form A or Form B relay with contact rating 30VDC@1A or 125VAC@0.5A
- Support web-based I/O control
- Optional DIN RAIL mounting kit (DK-35A)
- Windows configuration utility included

### Access Control Guidelines

#### Default Access Ports

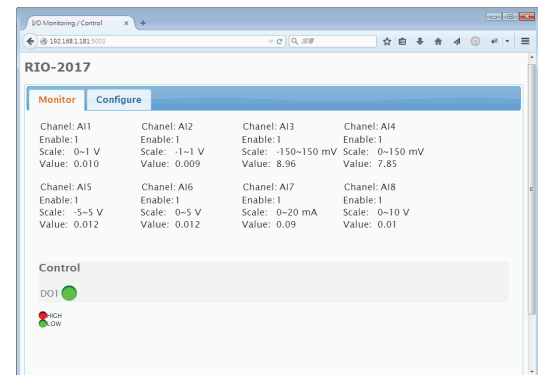
- Modbus / TCP Port: 502
- Telnet Console Port: 5001
- HTTP Port: 5003

#### Access Through Modbus Protocols

- Modbus / TCP via LAN interface
- Modbus / ASCII, Modbus / RTU via RS-485 interface

#### Access Through HTTP GET / POST Protocols

- AJAX-enabled demo page for up-and-running web-based monitoring and controls



#### Windows Utility Functionalities

- Broadcast search
- Configuration
- User web page conversion

### Ordering Information

- **RIO-2017**  
Analog Input Remote I/O Module
- **DK-35A**  
DIN RAIL Mounting Kit
- **PWR-12V-1A**  
110~240VAC to 12VDC 1A Power Adapter
- **Software Utility**  
Download from Artila web