

Introduction

RES-3242GC/-E is designed for the applications of facility management, sewage treatment, power utility, telecommunication, transportation and all other mission-critical applications that require reliable Ethernet connectivity. RES-3242GC/-E contains the interface of 10/100/1000Base-T(X) or 1000Base-X ports in SFP connector with redundant ring technology. RES-3242GC/-E can protect your mission-critical applications from network interruptions or temporary malfunctions with its maximum 10ms ultra fast recovery time. RES-3242GC/-E also support functions of network management, such as SNMP, RMON and Port/Tag-based VLAN security. Therefore, RES-3242GC/-E is one of the best choice for highly-managed and Fiber Ethernet application.

Network Management and Remotely Configured

The management switch can be configured smartly by web browser, Telnet, CLI, and windows utility (Open-Vision). Network administrators can determine to send event notifications through email, or SNMP trap. To enhance the security, port access can be limited to pre-defined IP address table, as well as segment ports into different VLANs, or filtering multicast traffic by IGMP Snooping.

Features

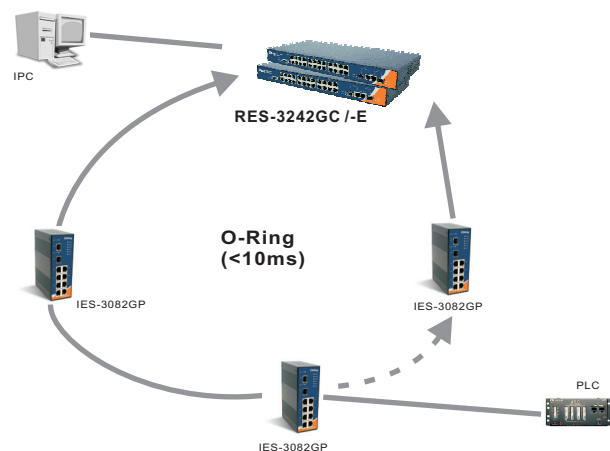
- World's fastest Redundant Ethernet Ring: O-Ring(Recovery time < 10ms over 250 units connection)
- Open-Ring support the other vender's ring technology in open architecture
- Managed Layer 2+ Switch with 24 10/100Mbps Ports and 2 Combo Gigabit Copper/SFP Ports
- Support ACLs, 802.1x User Authentication for Security
- Management through SNMP, Telnet, Web-based GUI and Window Utility
- 8K MAC Address Table available
- Additional dual DC input and one relay output for RES-3242GC-E model

O-Ring Technology

World's Fastest Recovery Time: < 10ms (O-Ring)

RES-3242GC/-E support the fastest 10ms redundant recovery time which make a non-stop Ethernet connection. If your primary communication path is disconnected, the O-Ring Technology provides a redundant path in the network. Its 10ms ultra fast recovery time allows RES-3242GC/-E to supply a solid foundation of highly fault-tolerant and easily-managed network.

Redundant Ring (<10ms): O-Ring

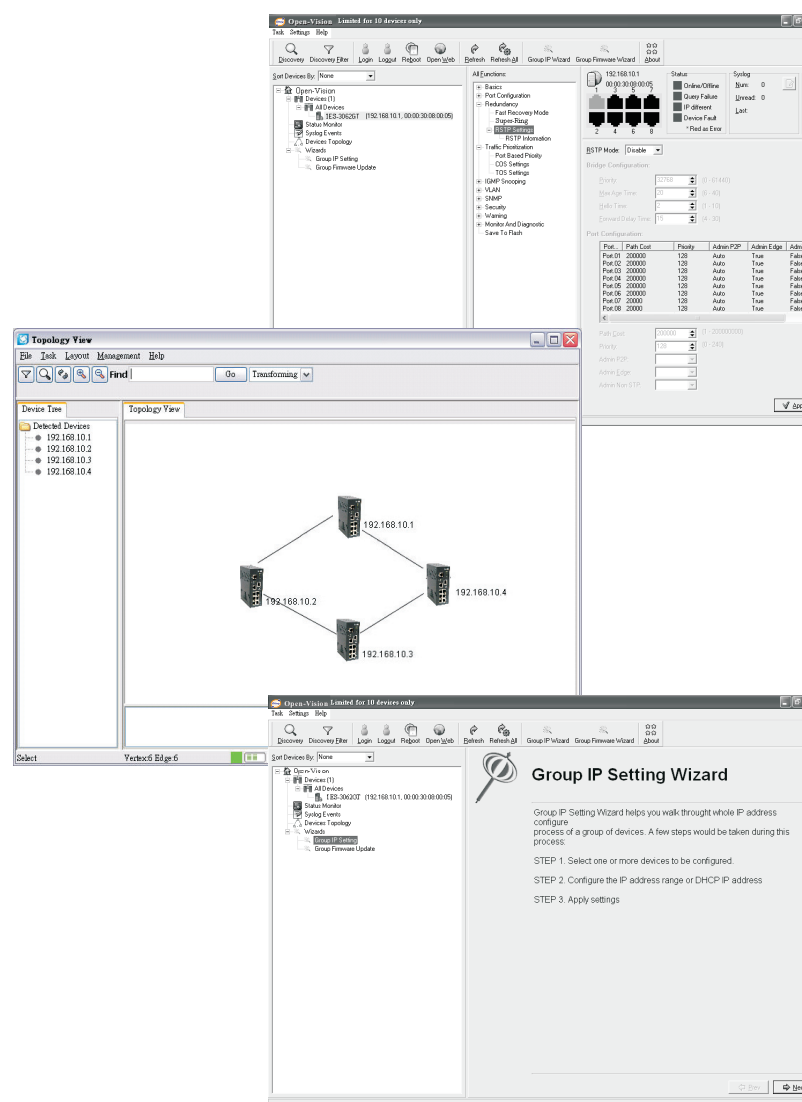


Management Utility Software: Open-Vision

Open-Vision is not only a powerful utility for configuring but also a useful utility for monitoring. You can monitor switches' status via Open-Vision. When the monitored switches fail, the failure information will be displayed on Open-Vision interface.

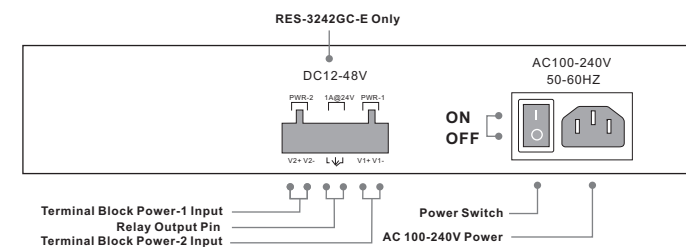
Open-Vision with its advanced technology can manage not only one but all switches from the same network simultaneously. Compare to other management software, it is more advanced and convenient. That is, you could simply set up all the switches' IPs, backup all the configuration files, and upgrade all firmware at once which are in the same switch version, but no longer set up these functions one by one. By Open-Vision, the effort of networking technician can be minimized.

Network Management Windows Utility



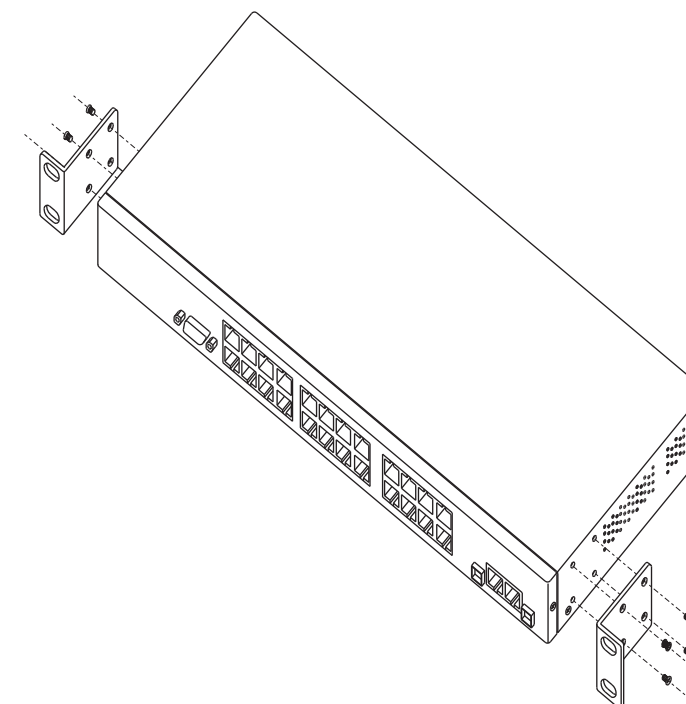
Product Interface

Back View



Installation

Rack-mounted Install Step





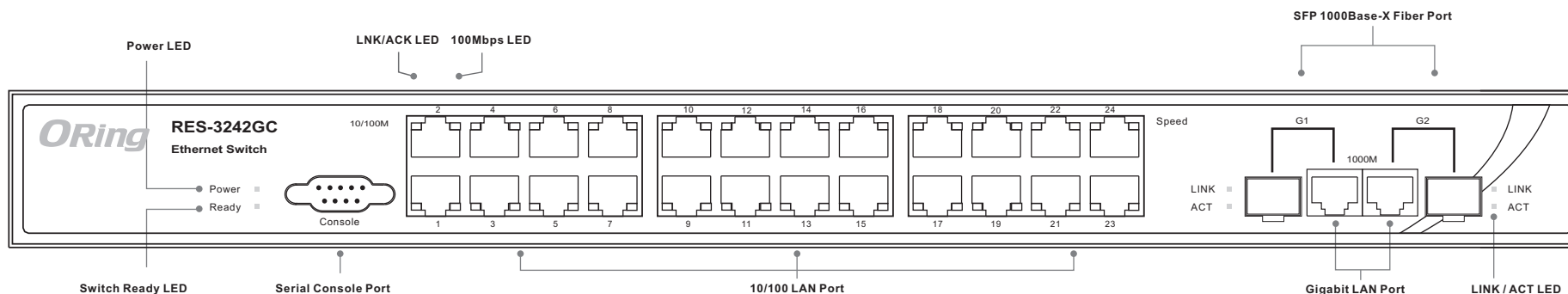
Quick Installation Guide

RES-3242GC/RES-3242GC-E

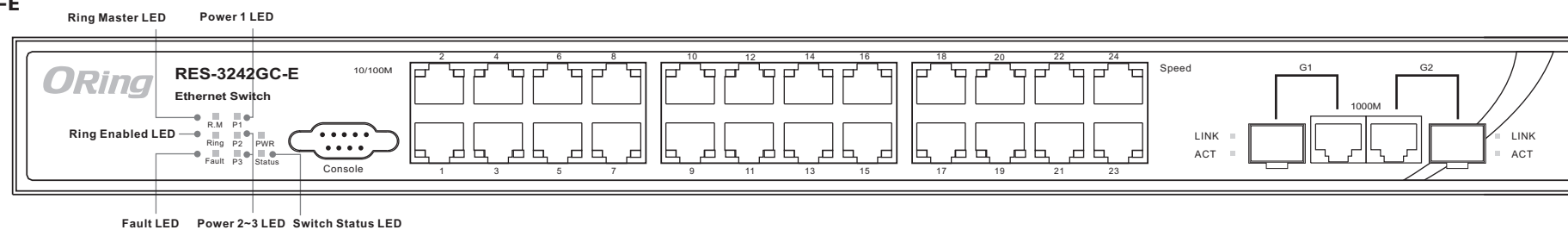
Managed Ethernet Switch

Front Panel

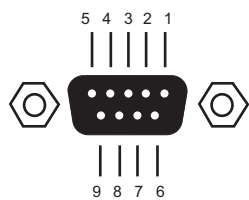
RES-3242GC



RES-3242GC-E



Console Port Pin Assignment

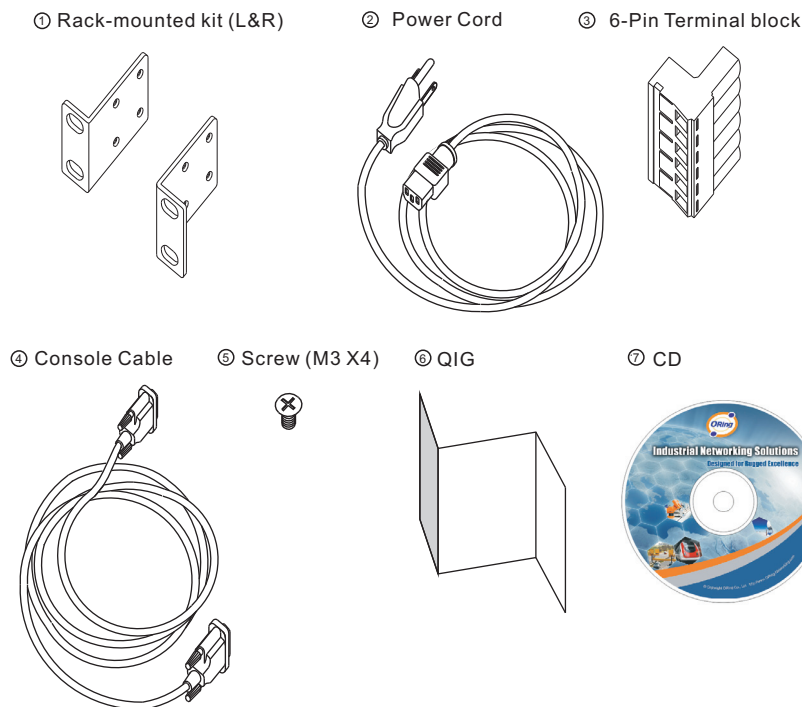


Pin#	RS232 Signal
1	-
2	TXD
3	RXD
4	-
5	GND
6	-
7	-
8	-
9	-

Console port act as DCE

Setting: 9600 bps, 8, N, 1
User name: admin
Password: admin

Accessory



Packing list

Model name	Model Description	Accessory
RES-3242GC_EU	Industrial 26-port rack mount managed Ethernet switch with 24x10/100Base-T(X) and 2xGigabit combo ports, SFP socket, EU power code	⊗ X 1, ⊗ X 1, ⊗ X 1, ⊗ X 8, ⊗ X 1, ⊗ X 1
RES-3242GC_US	Industrial 26-port rack mount managed Ethernet switch with 24x10/100Base-T(X) and 2xGigabit combo ports, SFP socket, US power code	⊗ X 1, ⊗ X 1, ⊗ X 1, ⊗ X 8, ⊗ X 1, ⊗ X 1
RES-3242GC_UK	Industrial 26-port rack mount managed Ethernet switch with 24x10/100Base-T(X) and 2xGigabit combo ports, SFP socket, UK power code	⊗ X 1, ⊗ X 1, ⊗ X 1, ⊗ X 8, ⊗ X 1, ⊗ X 1
RES-3242GC_JP	Industrial 26-port rack mount managed Ethernet switch with 24x10/100Base-T(X) and 2xGigabit combo ports, SFP socket, JP power code	⊗ X 1, ⊗ X 1, ⊗ X 1, ⊗ X 8, ⊗ X 1, ⊗ X 1
RES-3242GC-E-EU	Industrial 26-port rack mount managed Ethernet switch with 24x10/100Base-T(X) and 2xGigabit combo ports, SFP socket, enhanced version, EU power cord	⊗ X 1, ⊗ X 1, ⊗ X 1, ⊗ X 1, ⊗ X 8, ⊗ X 1, ⊗ X 1
RES-3242GC-E-US	Industrial 26-port rack mount managed Ethernet switch with 24x10/100Base-T(X) and 2xGigabit combo ports, SFP socket, enhanced version, US power cord	⊗ X 1, ⊗ X 1, ⊗ X 1, ⊗ X 1, ⊗ X 8, ⊗ X 1, ⊗ X 1
RES-3242GC-E-UK	Industrial 26-port rack mount managed Ethernet switch with 24x10/100Base-T(X) and 2xGigabit combo ports, SFP socket, enhanced version, UK power cord	⊗ X 1, ⊗ X 1, ⊗ X 1, ⊗ X 1, ⊗ X 8, ⊗ X 1, ⊗ X 1
RES-3242GC-E-JP	Industrial 26-port rack mount managed Ethernet switch with 24x10/100Base-T(X) and 2xGigabit combo ports, SFP socket, enhanced version, JP power cord	⊗ X 1, ⊗ X 1, ⊗ X 1, ⊗ X 1, ⊗ X 8, ⊗ X 1, ⊗ X 1

Copyright© 2009 ORing
All rights reserved.

ORing Industrial Networking Corp.
TEL: +886-2-2218-1066 Website: www.oring-networking.com
FAX: +886-2-2218-1014 E-mail: support@oring-networking.com