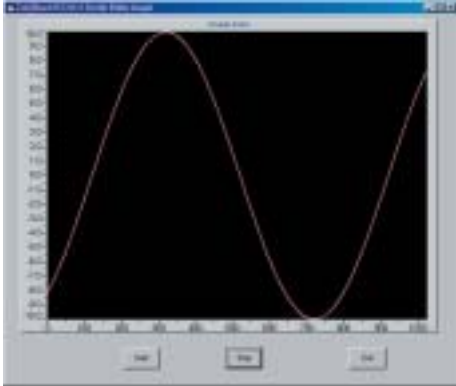


D2K-OCX/PCIS-OCX

ActiveX Controls for ADLINK Data Acquisition Cards



```

Private Sub CmdStart_Click()
    Dcgraph1.ClearPlots
    Pci91131.StartContAI
End Sub

Private Sub CmdStop_Click()
    Pci91131.StopContAI
End Sub

Private Sub CmdExit_Click()
    End
End Sub

Private Sub Pci91131_AIHalfReady_ScaledData As Variant, BinaryCodes As Variant)
    Dcgraph1.PlotGrapha ScaledData, 1
End Sub
  
```

Writing Program with PCIS-OCX

Features

- 32-bit ActiveX controls for data acquisition
- Easy-to-use property page interface for configuration
- Event-driven programming
- Interoperability with Visual Basic, Visual C++, C++ Builder and Delphi
- Make full use of the capabilities of ADLINK devices
- Provide example programs for Visual Basic, Visual C++, and C++ Builder

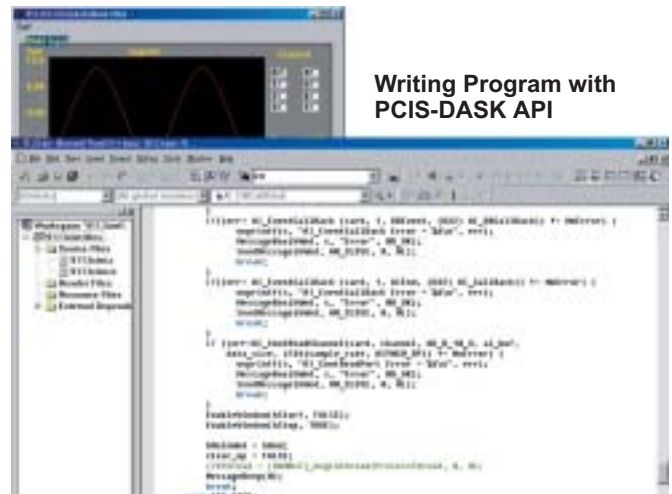
What is ActiveX ?

ActiveX is a standard of software component proposed by Microsoft. You can insert any ActiveX control into your application to use the functionality it provides without knowing how it works. ActiveX is supported by many popular programming environments, such as VB, VC++, C++ Builder and Delphi. With ActiveX controls, developers with varied backgrounds and expertise are able to bring their creativity to any kind of application.

Introduction

D2K/PCIS-OCX ActiveX controls communicate with ADLINK data acquisition cards to perform digital, analog, and timer/counter operations. These ActiveX controls well-designed to hide all details of hardware manipulation so the data acquisition operations can be achieved by only few lines of codes. Furthermore, any hardware configuration can be done with the easy-to-use property pages, and the acquired data is returned in a event-driven manner.

For that reason, developing a data acquisition application has never been so easy with ADLINK PCIS-OCX/D2K-OCX ActiveX controls.



Writing Program with PCIS-DASK API

Specification

D2K-OCX

- 32-bit ActiveX controls
- Support ADLINK DAQ-20xx/DAQ22xx/DAQ-25xx data acquisition cards

PCIS-OCX

- 32-bit ActiveX controls
- Support ADLINK PCI-9xxx/PCI-8554/PCI-7xxx/PCI-6xxx data acquisition cards

Software Information

- **D2K-OCX**
ActiveX controls for DAQ-2000 data acquisition cards
- **PCIS-OCX**
ActiveX controls for NuDAQ PCI-bus data acquisition cards