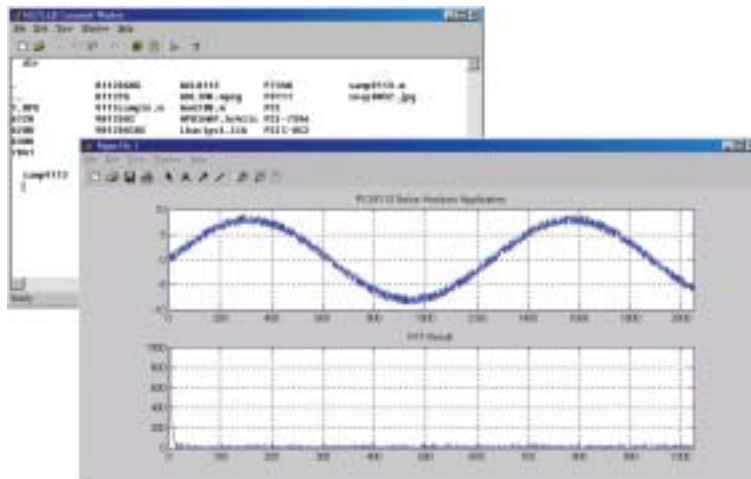
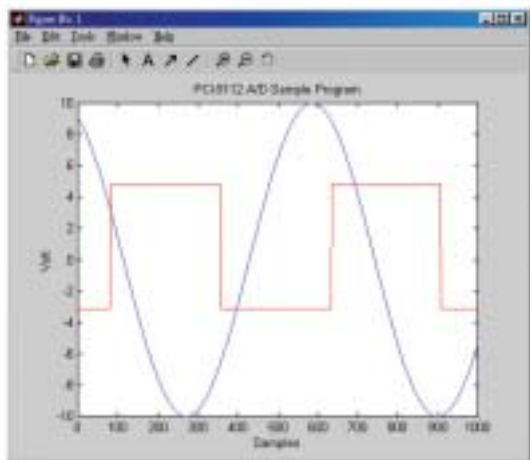


# PCIS-MTLB/D2K-MTLB

MATLAB® Interface / MATLAB® Data Acquisition Toolbox Adapter



## What is MATLAB

MATLAB® is a software package of MathWorks. MATLAB® integrates mathematical computing and visualization to provide a flexible environment for technical computing. It is widely used by engineers and scientists to analyze the data and simulate the system.

## Features

- MATLAB® driver for NuDAQ and DAQ-2000 series
- Support Windows 98/NT/2000/XP
- Work with MathWorks MATLAB® Data Acquisition Toolbox
- Access live, measured data directly from MATLAB
- Support analog input, analog output, and digital I/O
- Direct interface to supported board features, such as single/multiple channels acquisition and single-point and buffered I/O

## D2K-MTLB

D2K-MTLB is the MATLAB® Data Acquisition Toolbox adapter driver. It enables customers familiar with MATLAB to control ADLINK DAQ-2000 series data acquisition cards. D2K-MTLB is based on the open and extensible MATLAB® environment, it allows you to easily customize your acquisitions, integrated environment to support the entire data acquisition and analysis process. The D2K-MTLB are designed based on the Data Acquisition Toolbox commands and therefore enormously shortens the learning curve for using DAQ-2000 cards in MATLAB.

## PCIS-MTLB

The PCIS-MTLB provides a full set of functions for controlling and communicating with NuDAQ PCI-bus data acquisition cards. The functions are identical to PCIS-DASK functions and are encapsulated in the MATLAB® MEX-file format. With PCIS-MTLB, you can control and communicate with the NuDAQ cards using MATLAB commands.

## Free Software

- **D2K-MTLB**  
Data Acquisition Toolbox adapter for DAQ-2000 series data acquisition cards
- **PCIS-MTLB**  
MATLAB driver for NuDAQ PCI-bus data acquisition cards