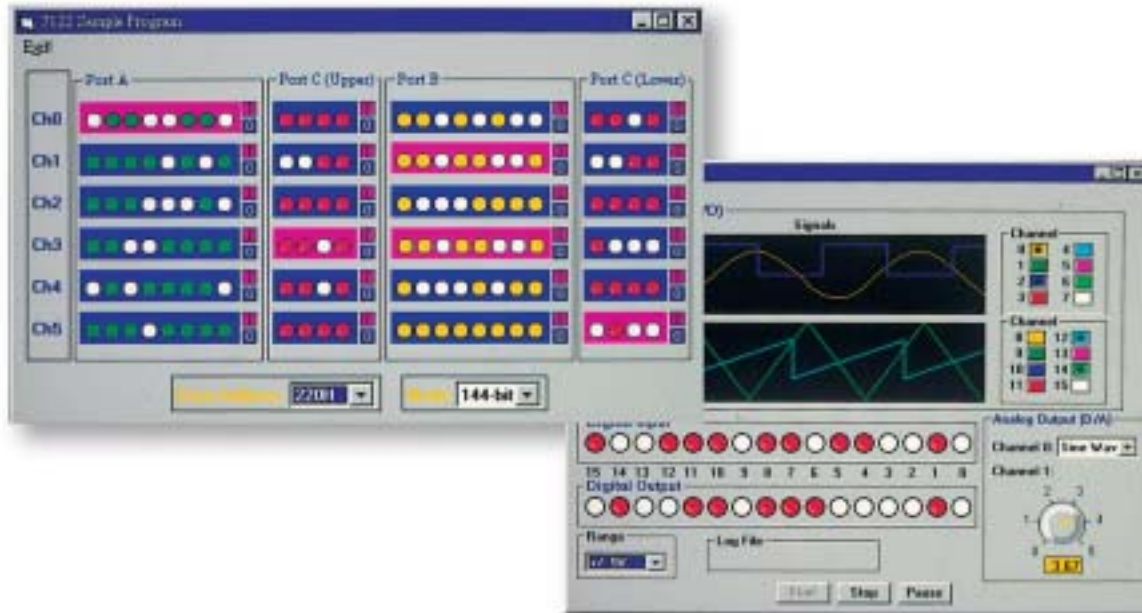


ACLS-DLL1/DLL2

Windows DLL Driver For NuDAQ ISA-bus Data Acquisition Cards



Features

- ACLS-DLL1 is the device drivers for NuDAQ ISA-bus digital I/O cards
- ACLS-DLL2 is the device drivers for NuDAQ ISA-bus multi-function cards.
- Real 32-bit device drivers for Windows 95/98/NT/2000/XP
- Provide link files for Visual C/C++ and Borland C++
- Provide header files for Visual Basic and Borland Delphi
- Provide a complete set of sample programs for Visual C/C++ and Visual Basic

Introduction

The ACLS-DLL1/DLL2 software is a standard Windows DLLs. These driver APIs can be used with any Windows programming language that supports DLLs, including Microsoft Visual C/C++, Visual Basic, Borland C++, and Delphi etc. A complete set of sample programs for Microsoft Visual C/C++ and Visual Basic clarify the usage of each provided function. Also you are welcome to modify them to fit your requirements for saving your development effort and time.

Specification

ACLS-DLL1

- Standard Windows driver APIs
- Support ADLINK NuDAQ ISA-bus digital I/O cards
- Support Windows 95/98/NT/2000/XP

ACLS-DLL2

- Standard Windows driver APIs
- Support ADLINK NuDAQ ISA-bus multi-function cards
- Support Windows 95/98/NT/2000/XP

Software Information

■ ACLS-DLL1

Windows 95/98/NT/2000/XP device drivers for ADLINK NuDAQ ISA-bus digital I/O cards

■ ACLS-DLL2

Windows 95/98/NT/2000/XP device driver for ADLINK NuDAQ ISA-bus Multi-function data acquisition cards