

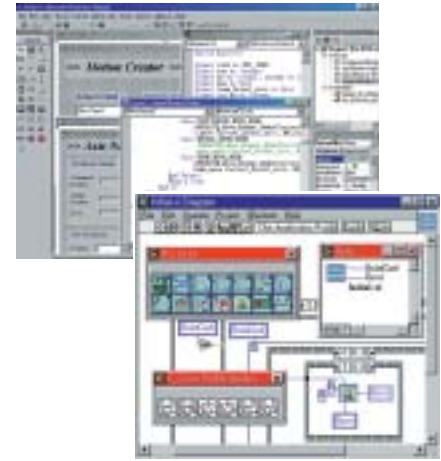


MotionCreator™



ISaGRAF C-function Library

Windows DLL



LabVIEW MOTION VIs

Specifications

Motion

- Number of controllable axes: 2
- Max. number of cards in one system: 12
- 0.05 pps-2.4 Mpps programmable DIR/OUT, CW/CCW pulse command output
- 28-bit Up/Down counter for reading encoder
- Position range: 0-268, 435, 455 pulses (28-bit)
- Position comparator and trigger output

Motion Interface I/O Signals

- All I/O pins are 2500 VRMS optically isolated
- Incremental encoder signals input pins: DIR/OUT, EA/EB
- Encoder index signal input: EZ
- Mechanical Limit/Switch signal input pins: ±EL, ±SD and ORG
- Servomotor Interface I/O pins: INP, ALM, ERC
- General DO pin: SVON
- General DI pin: RDY
- Pulser signal input: PA and PB
- Simultaneous signal I/O pins: STA and STP
- Position compare output pin: CMP

General Purpose Digital I/O

- 16-CH isolated digital inputs & 16-CH isolated digital outputs

General Specifications

- Power requirement
 - Slot power supply (input): +5 V±5%, 900 mA max.
 - External power supply (input): +24 VDC, ±5%, 500 mA max.
 - External power supply (output): +5 V±5%, 100 mA max.
- Operating temperature: 0 to 50°C

Termination Board

■ **DIN-100M15**

Termination Board for General Purpose with 1.5M cable



DIN-100M15

■ **DIN-812M**

Termination Board for Mitsubishi Servo Driver with 1M cable



DIN-812M

PCI-8132 Pin Assignment of the 100-pin SCSI-type Connector

VPP+5V	1	51	DO COM+
EXOND	2	52	EXGND
OUT1+	3	53	DO0
OUT1-	4	54	DO1
DIR1+	5	55	DO2
DIR1-	6	56	DO3
SVON1	7	57	DO4
ERC1	8	58	DO5
ALM1	9	59	DO6
INP1	10	60	DO7
RDY1	11	61	DO8
EXGND	12	62	DO9
EA1+	13	63	DO10
EA1-	14	64	DO11
EB1+	15	65	DO12
EB1-	16	66	DO13
EZ1+	17	67	DO14
EZ1-	18	68	DO15
VPP+5V	19	69	EXGND
EXGND	20	70	EXGND
OUT2+	21	71	DI COM+
OUT2-	22	72	DI COM-
DIR2+	23	73	DI0
DIR2-	24	74	DI1
SVON2	25	75	DI2
ERC2	26	76	DI3
ALM2	27	77	DI4
INP2	28	78	DI5
RDY2	29	79	DI6
EXGND	30	80	DI7
EA2+	31	81	DI8
EA2-	32	82	DI9
EB2+	33	83	DI10
EB2-	34	84	DI11
EZ2+	35	85	DI12
EZ2-	36	86	DI13
PEL1	37	87	DI14
MEL1	38	88	DI15
PSD1	39	89	EXGND
MBD1	40	90	EXGND
ORG1	41	91	PA+
EXGND	42	92	PA-
PEL2	43	93	PB+
MEL2	44	94	PB-
PSD2	45	95	EXGND
MSD2	46	96	GMP1
ORG2	47	97	GMP2
EXGND	48	98	EXGND
EXGND	49	99	VPP+24V
EXGND	50	100	VPP+24V

Ordering Information

- **PCI-8132**
2-Axis Motion Control Card

Note: Products are shipped with software development kits for DOS, Windows 2000/NT/XP/9x, and MotionCreator.

1 Software Solutions

2 PXI/CompactPCI Platforms

3 PXI-Based Instruments

4 PXI/CompactPCI Modules

5 PCI DAQ Cards

6 PCI DIO Cards

7 PCI/104-Plus Products

8 ISA DAS/DIO Cards

9 Wiring Termination Boards

10 Motion Control Cards

11 Maching Vision Products

12 Remote I/O Modules