

Specifications

Motion

- Motion Cycle Time: 0.88 ms
- Number of controllable axes: 12 / 6 axes for PCI-8372/8366
- Max No. of cards in one system: 15
- 3 channels 32-bit 5 MHz Up/Down counter for encoder feedback signals.

Motion Interface I/O Signals

- External encoder signals input pins: EA and EB.
- Encoder index signal input: EZ.
- Mechanical limit switch and origin signal input pins: ±EL and ORG.

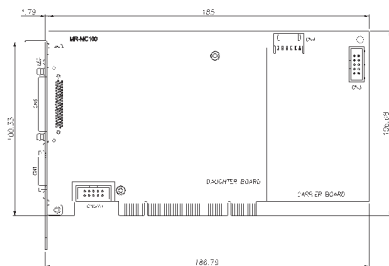
General Purpose I/O

- 2 channels isolated digital inputs
- Input Voltage: 0-24 V
- Input resistance: 2.4 kΩ @ 0.5 W
- 2 channel open collector output
- Sink Current: 4 mA
- Bandwidth 10 kHz
- 6 channels TTL Digital outputs

Analog Output (D/A):

- Resolution: 16 bits
- Output channels: 2 Single-Ended channels
- Output range: ±10 V, Bipolar
- Settling Time: 10 μs
- Output driving ±5 mA

Mechanical outline drawing



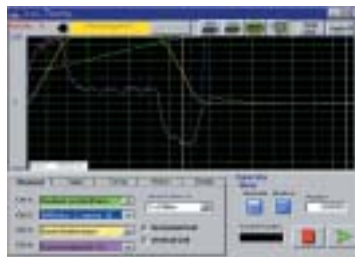
Function Library

- System Functions
- Parameters management
- Single Motion
- Home Move
- Continuous Motion
- Position Compare
- Linear Interpolation
- Circular Interpolation
- Programmable Interrupt

MotionCreator™



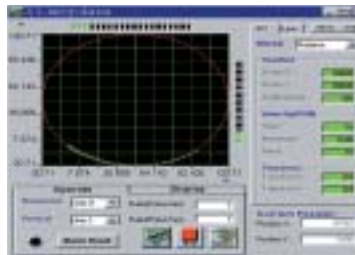
Single Axis Operation



Servo Tuning



Servo Driver Parameters



XY Move Operation

Termination Board

■ DIN-68S/2

Termination Board for CN5 with 1.8M cable

CN5 Pin Assignment

A.COM	1	35	DA1
PEL1	2	36	DA2
MEL1	3	37	PEL2
ORG1	4	38	MEL2
PEL3	5	39	ORG2
MEL3	6	40	PEL4
ORG3	7	41	MEL4
PEL5	8	42	ORG4
MEL5	9	43	PEL6
ORG5	10	44	MEL6
IPT-COM	11	45	ORG6
EA1+	12	46	EA2+
EA1-	13	47	EA2-
EB1+	14	48	EB2+
EB1-	15	49	EB2-
EZ1+	16	50	EZ2+
EZ1-	17	51	EZ2-
PEL7	18	52	PEL8
MEL7	19	53	MEL8
ORG7	20	54	ORG8
PEL9	21	55	PEL10
MEL9	22	56	MEL10
ORG9	23	57	ORG10
PEL11	24	58	PEL12
MEL11	25	59	MEL12
ORG11	26	60	ORG12
IPT-COM	27	61	IPT-COM
DO-COM	28	62	DI1
EA3+	29	63	DI2
EA3-	30	64	EMG
EB3+	31	65	EMG-COM
EB3-	32	66	DO1
EZ3+	33	67	DO2
EZ3-	34	68	DO-COM

Ordering Information

- PCI-8372
PCI Bus SSCNet 12-Axis Motion Control Card
- PCI-8366
PCI Bus SSCNet 6-Axis Motion Control Card

Note: Products are shipped with software development kits for DOS, Windows 2000/NT/XP/9x, and Motion Creator

SSCNET: Servo System Control Network defined by Mitsubishi Electric Co.

1 Software Solutions

2 PXI/ CompactPCI Platforms

3 PXI-Based Instruments

4 PXI/ CompactPCI Modules

5 PCI DAQ Cards

6 PCI DIO Cards

7 PC/ 104-Plus Products

8 ISA DAS/ DIO Cards

9 Wiring Termination Boards

10 Motion Control Cards

11 Maching Vision Products

12 Remote I/O Modules