

Pentium III processor-based Panel PC without fan

■ Panel PC without PCI bus slots IPC-PT/H630X(PCI)C

- 15-inch TFT color LCD (1024 x 768)



■ Panel PC with 2 PCI bus slots IPC-PT/H630X(PCI)CP

- 15-inch TFT color LCD (1024 x 768)



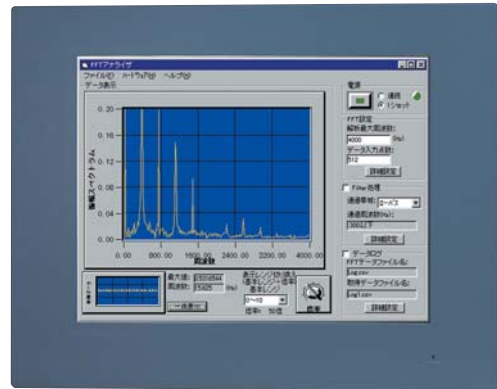
■ Panel PC without PCI bus slots IPC-PT/L630S(PCI)C

- 12.1-inch TFT color LCD (800 x 600)

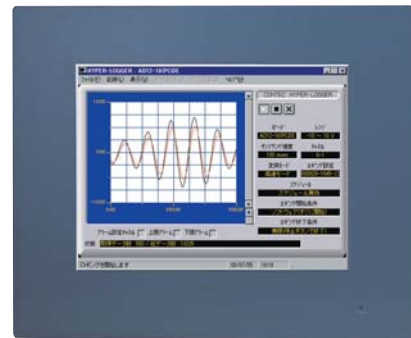


■ Panel PC with 2 PCI bus slots IPC-PT/L630S(PCI)CP

- 12.1-inch TFT color LCD (800 x 600)



IPC-PT/H630X(PCI)C
IPC-PT/H630X(PCI)CP



IPC-PT/L630S(PCI)C
IPC-PT/L630S(PCI)CP

Features

- Equipped with Low Power Pentium 3800MHz(FSB 133MHz)CPU.
- Exhibits high reliability and noiseless operation (when equipped with CONTEC silicon disk drive PC-SDD V Series).
- Stable supply (Embedded version is used for CPU and chip set.)
- Employs Phoenix BIOS customized by CONTEC to enable BIOS level support.
- In addition to PC I/F, PCMCIA (CardBus supported), Audio (AC97-compliant), 100BASE-TX and RAS I/F are standardly provided.
- Equipped with secondary-IDE connector. Optional CD-ROM can be externally connected.
- CMOS data can be stored by EEPROM, enabling the start-up even when the battery is drained. Shape-compatible with conventional 600 Series.
- Dustproof/waterproof front panel (IP65)
- Shape-compatible with IPC-BX/M600(PCW) Series.
- Supported OS (Windows 2000 Professional, Windows NT Workstation 4.0, Windows XP Embedded, Windows NT Embedded 4.0)

■ SPECIFICATIONS

Model	IPC-PT/H630X(PCI)C	IPC-PT/H630X(PCI)CP	IPC-PT/L630S(PCI)C	IPC-PT/L630S(PCI)CP
Display	15-inch TFT color LCD XGA (1024 x 768 dots)		12.1-inch TFT color LCD SVGA (800 x 600 dots)	
LCD type	15-inch TFT color LCD XGA (1024 x 768 dots)			
Number of colors	260,000			
Touch panel	4096 x 4096 (emulated in 1024 x 768 mode)		4096 x 4096 (emulated in 800 x 600 mode)	
Resolution	4096 x 4096 (emulated in 1024 x 768 mode)			
Detection method	Analog resistive			
Backlight ON/OFF	Enabled (software control)			
CPU	Low Power Pentium III 800MHz, FSB 133MHz (Intel)			
Chip set	Intel 815E			
Main memory	256 MB standard *1 / Max. 256MB (3.3V 144pin SO-DIMM PC133 Socket x 2)			
Display I/F	DVI-I 29pin *2			
Keyboard I/F	PS/2-type keyboard-compatible (6pin, MINI DIN connector)			
Mouse I/F	PS/2-type mouse-compatible (6pin MINI DIN connector)			
Audio	AC97 compliant (LINE IN, LINE OUT, MIC UN)			
FDD I/F	Equipped with a dedicated 26pin, half-pitch connector: 2 modes (Optional FDD: PC-FDD25BH)			
IDE HDD I/F	Ultra DMA/100, 2.5 inch IDE HDD or silicon disk drive: 1 internal unit			
Serial I/F	RS-232C(general-purpose): 2ch (SERIAL PORT1,2) 9pin, D-SUB connector			
Parallel I/F	Bi-directional, Centronics-compliant, 25pin D-SUB connector			
USB I/F	2ch (USB 1.1)			
LAN	Ethernet 100BASE-TX/10BASE-T RJ-45 connector, Intel ICH2 integrated			
PC card slot	PCMCIA Type I, II x 2 or III x 1 (Startup from ATA card not allowed) CardBus correspondence			
RAS function	WDT: 1sec to 255sec (RESET or external output is allowed at time expiration)			
Expansion board slot	None	Shared PCI slot x 2, Installable board	None	Shared PCI slot x 2, Installable board
RTC/CMOS	Lithium backup battery life: 10 years or more			
Power supply	Automatically switched between 85-132 VAC and 170-265 VAC (47-63 Hz)			
External dimensions (mm)	428(W) x 336(H) x 79(D)	428(W) x 336(H) x 139(D)	370(W) x 307(H) x 79(H)	370(W) x 307(H) x 139(D)
Weight	Approx. 7.6kg	Approx. 8.5kg	Approx. 6.6kg	Approx. 7.5kg

*1 A 256 MB memory module is plugged in one socket.

*2 Using the DVI-analog RGB adapter (accessory bundled) allows an ordinary analog RGB input display to be connected to the IPC-PT/x630x(PCI). Note that Panel Link input displays cannot be connected.

Differences from IPC-PT/x600x(PCW) Series

- Improved processing power enabled by faster CPU
- Standardly equipped audio function
- 2 built-in storage units (one of which must be SDD)
- Expansion bus slot is limited to PCI bus (CP model)
- Increased memory capacity (up to 512MB)