

Celeron processor-based Panel PC without fan

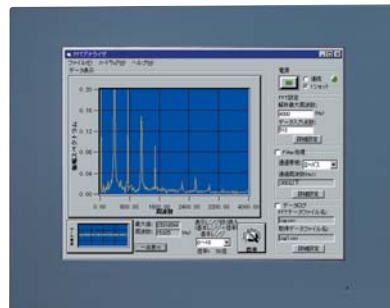
■ Panel PC with PC card slots IPC-PT/H600X(PCW)C

- 15-inch TFT color LCD(1024x768)



■ Panel PC with PCI/ISA bus slots IPC-PT/H600X(PCW)P

- 15-inch TFT color LCD(1024x768)



IPC-PT/H600X(PCW)C

FEATURES

- Equipped with the latest Low Power Mobile Celeron 400MHz CPU
- Long, reliable supply (The CPU and chip set are embedded versions.)
- Fan-less operation achieved by natural air-cooling
- Ten-year long-life power supply at an ambient temperature of 40°C
- Dustproof/waterproof front panel (IP65)
- Adoption of BIOS (Phoenix Technologies, Ltd.) customized by CONTEC to support the BIOS level
- Supports OS :Windows 2000 Professional, Windows NT 4.0 Workstation, Windows 98 Second Edition, Windows NT Embedded
Contact us in terms of Windows NT Embedded.

■ SPECIFICATIONS

Model	IPC-PT/H600X(PCW)C	IPC-PT/H600X(PCW)P
CPU	Low Power Mobile Celeron 400MHz (FSB100MHz)	
Main memory	256 MB maximum in 3.3-V, 144-pin SO DIMM socket x 2 (Use 1 socket for 64 or 128 MB; 2 sockets for 256 MB.)	
Display		
LCD type	15-inch TFT color LCD XGA (1024x768)	
Number of colors	260,000	
Touch panel		
Resolution	4096x4096 (emulated in 1024 x 768 mode)	
Detection method	Analog resistive	
Backlight ON/OFF	Enabled (software control)	
Interfaces		
CRT I/F	mini D-SUB 15-pin connector	
Keyboard I/F	PC/AT keyboard compatible (6-pin MIN DIN connector)	
Mouse I/F	PS/2 mouse compatible (6-pin MIN DIN connector)	
FDD I/F	Dedicated 26-pin half-pitch connector (2-mode x option FDD: PC-FDD25BH)	
IDE HDD I/F	Primary:Internal 2.5-inch IDE HDD or silicon disk drive Secondary:Dedicated 40-pin half-pitch connector (for optional CD-ROM drive)	
Serial I/F*1	RS-232C (general-purpose): 2 channels (serial ports 1 and 2), D-SUB 9-pin connector	
Parallel I/F**	Bidirectional Centronics compliant D-SUB 25-pin connector	
LAN I/F	100BASE-TX/10BASE-T RJ-45 [Intel]82559	
PC Card Slot*1	PCMCIA type I/II x 2 or III x 1*2	-
General-purpose I/O	Photocoupler insulated inputs and outputs: 3 channels each	
RAS function	WDT: 244.14 μsec to 255 sec (RESET or external output enabled upon time-out), Remote reset: External input signal	
OS	Windows 2000 Professional, Windows NT 4.0 Workstation, Windows 98 Second Edition, Windows NT Embedded	
Expansion board slots*1	-	PCI/ISA shared slot x 2, Acceptable board length:240mm max.
Power supply/Power consumption	85-132 VAC or 170-265 VAC (47-63 Hz)/50 VA (Expansion slots excluded)	
Dimensions Panel cut (mm)(mm)	398±0.5(W)x306±0.5(H)	
Weight	About 7.6Kg	About 8.5Kg

*1.No all of these functions can be used at the same time because the number of interrupt resources is limited.
*2.Cannot be started from ATA card.