



Multi-Programmable Display

ACTIVE TOUCH

ACTIVE TOUCH supports a wide array of interfaces including non-procedural serial communication, USB and Ethernet. Featuring a web browser and allowing playback of dynamic images, ACTIVE TOUCH gives you a multi-function, graphical interface for use in a broad range of applications from office environments to large production facilities.

Operation Terminal for Measuring Equipment

Operation Terminal for Audio and Lighting Systems

Input Terminal for Bar Code Readers

Terminal for Monitoring Images via Web Camera

Multi-signal Display Terminal

(Terminal for monitoring images via Web camera)

Supports Multiple Functions and Uses

An Information Terminal That Transcends Programmable Displays

Multi-Programmable Display

ACTIVE TOUCH[®]

English

Chinese

Japanese



12.1-inchi touch panel TFT color LCD

100VAC to 240VAC model **HPC-HLS10AC-E**

12VDC model **HPC-HLS10DC1-E**

24VAC model **HPC-HLS10DC2-E**

10.4-inchi touch panel TFT color LCD

100VAC to 240VAC model **HPC-HMV10DC2-E**

12VDC model **HPC-HMV10DC1-E**

24VAC model **HPC-HMV10DC2-E**

6.5-inchi touch panel TFT color LCD

12VDC model **HPC-HSV10DC1-E**

Easy to Operate



● User friendly Easy Screen Creation

Select and Switch screen

Click on-screen tabs and select the screen to edit. Switch between screens with one click.



Choose and Paste elements

Select the element from the toolbar, and then paste it on the screen.



Setting Element and Data-linking

The element settings can be easily changed on the properties page. Changed element can be registered to the Gallery for future use. Troublesome links between a device and an element (data link) can be visually integrated with the OPC Explorer.



● Double-click an element.

● Change the settings on the properties page.

● Changed element can be registered to the Gallery for future use.

● Start OPC Explorer and select data from the list to create the link

Go!

Active Touch



news box

CONTEC SOLUTION

Company Profile

Box PCs

Panel PCs

Flat Panel Displays

Silicon Disk Drive

Options

Box PCs & Panel PCs with Windows CE

Analog I/O

Digital I/O

Counters & Motor Controls

Communication

GPIB

Remote I/O

Bus Expansion System

Software

Accessories & Cables

Distributed Monitor & Control Network: F&IT

Multi-Programmable Display

Remote Monitoring Solution

Service & Products

Q-02

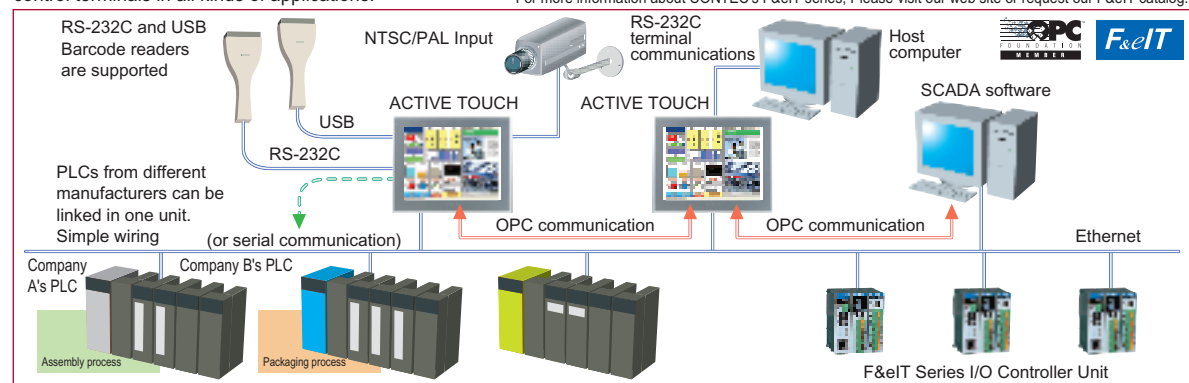
Multi Device

Multiplicity

● Supports CONTEC's lead-reduced Remote I/O and a variety of Monitor and Control Devices

Easily interfaces with general-purpose I/O or with CONTEC's remote I/O system (F&IT series with I/O Controller Unit) using standard Ethernet wiring. Active Touch also communicates with both RS-232C and USB style barcode readers. ACTIVE TOUCH displays are easily integrated as control terminals in all kinds of applications.

* For more information about CONTEC's F&IT series, Please visit our web site or request our F&IT catalog.



● Capable of Full Communication with OPC Server / Client Technology

ACTIVE TOUCH HMIs can exchange data with network nodes such as SCADA or process control systems with OPC DA2.0 (OLE for Process Control Data Access 2.0) server/client functions as well as with other ACTIVE TOUCH HMIs. ACTIVE TOUCH is also equipped with a general-purpose serial communications function, which supports data communication with a variety of other equipment (i.e. terminal communication with host computer).

● Simultaneous Links to Multiple Vendor PLCs

One unit can establish links to PLCs made by different manufactures. Control and monitoring can be integrated into one ACTIVE TOUCH display even when production lines for different processes are controlled by PLCs from multiple manufacturers.

Powerful Imaging

Variety

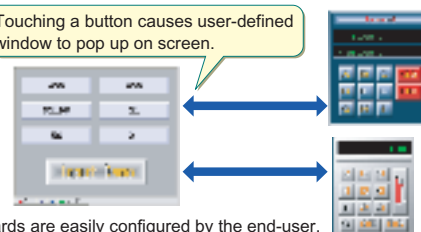
● Display Element Motion Function

Elements can be animated by values received from external devices. This function applies to both preconfigured elements and user-added bitmap or JPG pictures.



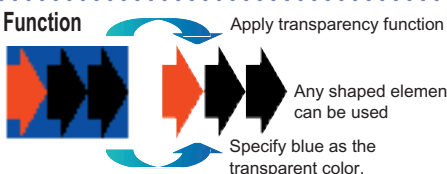
● Flexible Popup Windows

Touching a button causes user-defined window to pop up on screen.



● Transparent Element Function

Regular element display (bitmap, JPG, etc.)

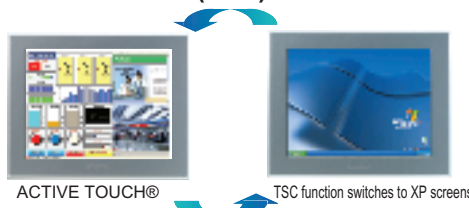


● Access Information from the Internet



Web pages or multimedia files can be transformed into elements and placed on the screen just like buttons or graphs. Set-up data or downloaded files are easily displayed.

● Terminal / Server / Client (TSC) Function



Windows® XP screens on networked computers can be called up seamlessly from the ACTIVE TOUCH screen by linking TSC to ACTIVE TOUCH objects. This allows connections using Windows® XP Professional remote desktop function as well as connections to terminal servers on Windows server.

Visit our website for the latest information on supported hardware.

<http://www.contec.com/activetouch/>