

# PCle-PoE2+/PCle-PoE4+

2-Port/4-Port x4 PCI-E Gigabit Power over Ethernet Frame Grabber Card



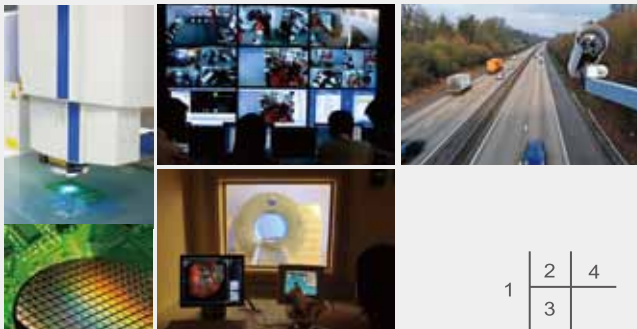
- x4 PCI Express® interface to support the total of 1GB/s bandwidth
- Supports four (PoE4+) or two (PoE2+) independent GigE Ports
- Compliant with IEEE 802.3af to deliver 15.4 W each port
- Supports 9 kB jumbo frame and link aggregation
- No external 12 VDC input needed for PCIe-PoE2+

## Introduction

PCle-PoE2+ and PCIe-PoE4+ are x4 PCI Express GigE frame grabber cards with PoE capability. PoE, or Power over Ethernet, is a technology to supply electrical power along with data on a standard Ethernet cable. PCIe-PoE2+ offers two PoE ports and PCIe-PoE4+ offers four PoE ports via independent Intel® 82574L Gigabit Ethernet controllers.

PCle-PoE2+ and PCIe-PoE4+ are dedicatedly designed for PoE cameras. Each port can deliver 15.4 W of power and 1000 Mb/s bandwidth over a CAT-5/CAT-6 cable of up to 100 meters. It features 9 kB jumbo frame and link aggregation, which conduct exceptional performance for continuously receiving large amount of image data. And for your convenience, we design PCIe-PoE2+ with the capability of directly drawing power from PCI-E bus so no external 12 VDC is needed.

The PoE technology significantly reduces the installation and maintenance cost by eliminating the power wire. Combining PoE and the Gigabit bandwidth, PCIe-PoE2+ and PCIe-PoE4+ are the perfect fit for your vision application!



## Application

1. Machine vision & AOI
2. Surveillance/Security
3. Medical Imaging
4. Automated Traffic Enforcement

## Specification

PCle-PoE2+		PCle-PoE4+	
Bus Interface	x4 PCI Express	Bus Interface	x4 PCI Express
Gigabit Ethernet Port	2x Gigabit Ethernet ports by Intel® 82574L controllers, supporting 9 kB jumbo frame & link aggregation (teaming)	Gigabit Ethernet Port	4x Gigabit Ethernet ports by Intel® 82574L controllers, supporting 9 kB jumbo frame & link aggregation (teaming)
PoE Capability	IEEE 802.3af compliant Each port delivers up to 15.4W	PoE Capability	IEEE 802.3af compliant Each port delivers up to 15.4W
Power Requirement	Maximal 1.6A @ 3.3V from PCI Express bus Maximal 2.8A @ 12V directly from PCI Express bus*	Power Requirement	Maximal 2.4A @ 3.3V from PCI Express bus Maximal 5.6A @ 12V from 4-pin power connector**
Operating Temperature	0 ~ 60 °C with air flow	Operating Temperature	0 ~ 60 °C with air flow
Dimension	167.7 mm (W) x 111.2 mm (H)	Dimension	167.7 mm (W) x 111.2 mm (H)

\* PCIe-PoE2+ is designed to directly draw 12V power for PoE devices from PCI Express bus. No external 12 VDC input is needed.

\*\* PCIe-PoE4+ is designed to obtain additional 12V power for PoE devices from its on-board 4-pin power connector.

## Ordering Information

- PCIe-PoE2+
  - 2-Port x4 PCI-E Gigabit Power over Ethernet Frame Grabber Card
- PCIe-PoE4+
  - 4-Port x4 PCI-E Gigabit Power over Ethernet Frame Grabber Card