



RES-3242GC / RES-3242GC-E

Industrial 26-port rack mount managed Ethernet switch series

Features

- World's fastest Redundant Ethernet Ring: **O-Ring** (recovery time < 10ms over 250 units of connection)
- **Open-Ring** support the other vendor's ring technology in open architecture
- **O-RSTP** support applications with complex topology
- **MSTP/RSTP/STP**(IEEE 802.1s/w/D)
- Secured ACL supported
- IGMP v2/v3 (IGMP snooping support) for filtering multicast traffic
- Port Trunking for easy of bandwidth management
- SNMP v1/v2c/v3 support for secured network management
- Support LLDP (Link Layer Discovery Protocol)
- Port lock to prevent access from unauthorized MAC address
- Event notification through Syslog, Email, SNMP trap, and Relay Output
- Bundled Windows utility (**Open-Vision**) support centralization management and configurable by Web-based ,Telnet, Console, CLI
- Include 100~240 VAC and Dual +12~+48 VDC or -12~-48 VDC power inputs for "-E" model
- 19 inches rack mountable

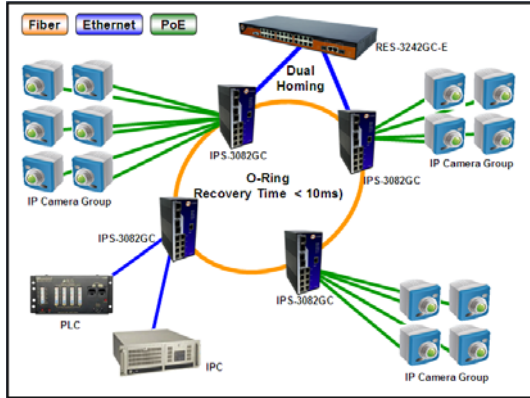


Introduction

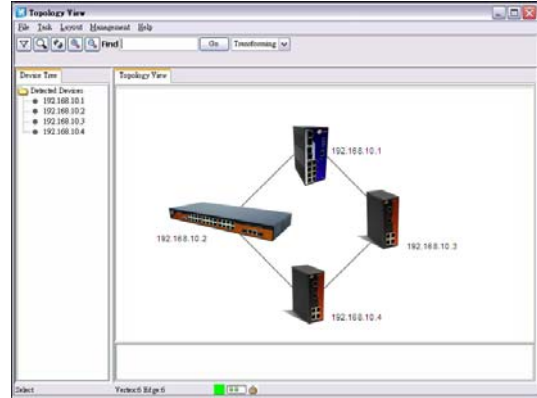
RES-3242GC series are 26-port rack mount managed Redundant Ring Ethernet switch with 24x10/100Base-T(X) and 2xGigabit Combo ports, SFP socket. With completely support of Ethernet Redundancy protocol, O-Ring (recovery time < 10ms over 250 units of connection), Open-Ring, O-RSTP and MSTP/RSTP/STP (IEEE 802.1s/w/D) can protect your mission-critical applications from network interruptions or temporary malfunctions with its fast recovery technology. RES-3242GC series can be managed centralized and convenient by a powerful windows utility — Open-Vision. RES-3242GC series also supports functions of network management, such as SNMP, RMON, Port Trunking, and Port/Tag-based VLAN security. RES-3242GC-E model support one full-range AC and dual DC power inputs from +12~48 VDC or -12~-48 VDC, and support extend operating temperature from -40°C to 70°C. One additional relay output is provided for system alarm warning, Therefore, RES-3242GC series is one of the most reliable choice for highly-managed and Fiber Ethernet application.

Open-Vision

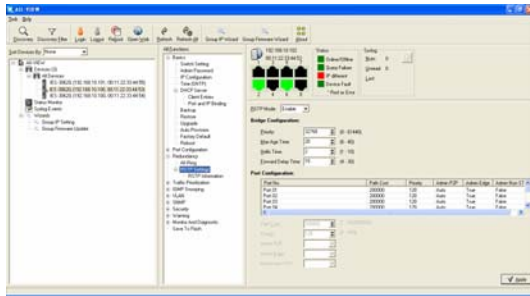
ORing's switches are intelligent switches. Being different from other traditional redundant switches, ORing provides a set of Windows utility (Open-Vision) for user to manage and monitor all of industrial Ethernet switches on the industrial network.



Network connection



Topology View

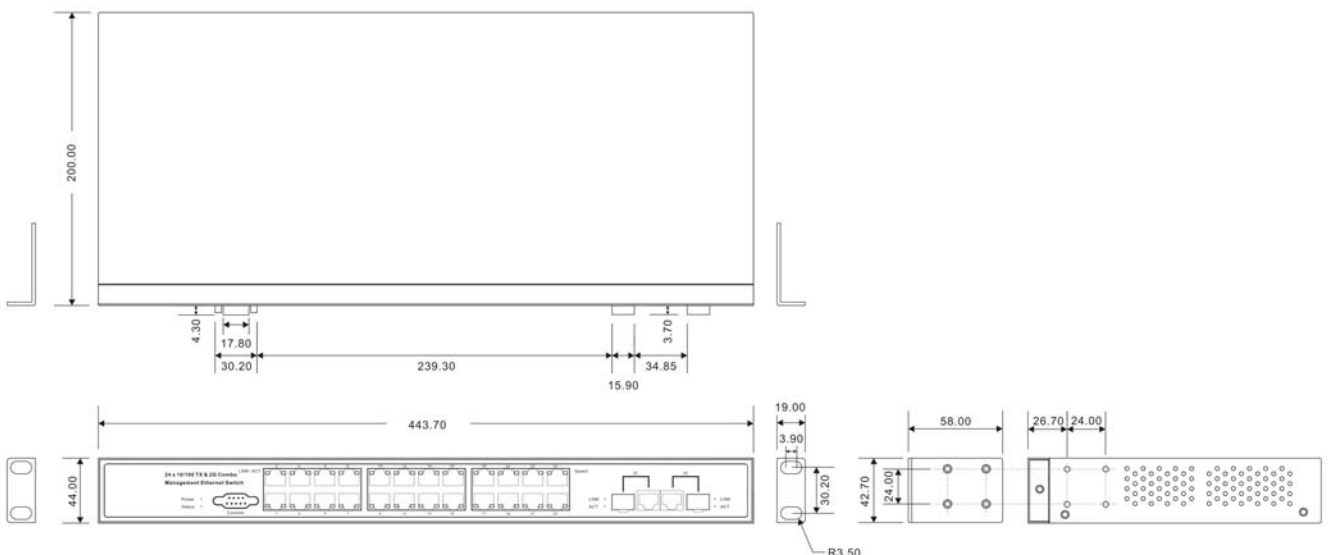


Monitoring and Configuration interface

Dimension

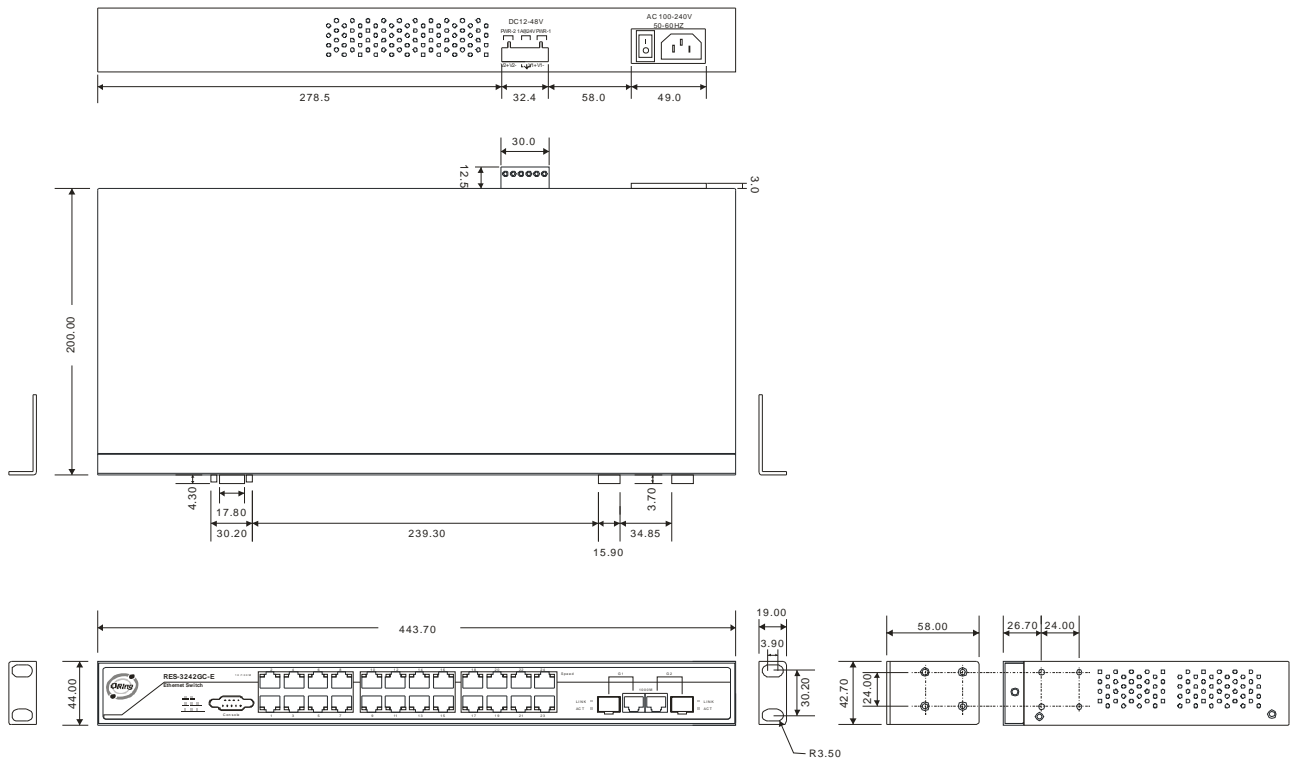
RES-3242GC

Unit = mm



RES-3242GC-E

Unit = mm



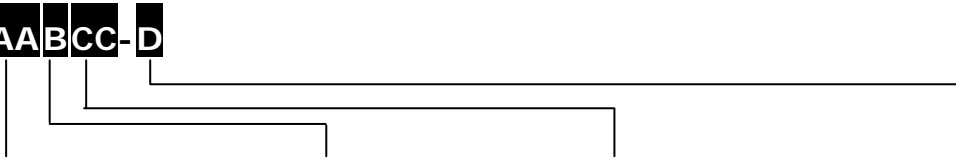
Specifications

ORing Switch Model	RES-3242GC	RES-3242GC-E
Physical Ports		
10/100 Base-T(X) Ports in RJ45 Auto MDI/MDIX		24
Gigabit combo port with 10/100/1000Base-T(X) and 1000Base-X SFP		2
RS-232 Serial Console Port	RS-232 console cable. 9600bps, 8, N, 1	
Technology		
Ethernet Standards	IEEE 802.3 for 10Base-T, IEEE 802.3u for 100Base-T(X), IEEE 802.3ab for 1000Base-T(X) IEEE 802.3z for 1000Base-X IEEE 802.3x for Flow control IEEE 802.3ad for LACP (Link Aggregation Control Protocol) IEEE 802.1D for STP (Spanning Tree Protocol) IEEE 802.1p for COS (Class of Service) IEEE 802.1Q for VLAN Tagging IEEE 802.1w for RSTP (Rapid Spanning Tree Protocol) IEEE 802.1s for MSTP (Multiple Spanning Tree Protocol) IEEE 802.1X for Authentication IEEE 802.1AB for LLDP (Link Layer Discovery Protocol)	
MAC Table	8192 MAC addresses	
Priority Queues	4	
Processing	Store-and-Forward	
Switch Properties	Switching bandwidth : 8.8Gbps Max. Number of Available VLANs: 4096	

	IGMP multicast groups: 1024 Port rate limiting: User Define	
Security Features	Enable/disable ports, MAC based port security ACL supported Port based network access control (802.1x) VLAN (802.1q) to segregate and secure network traffic Radius centralized password management SNMP v1/v2c/v3 encrypted authentication and access security	
Software Features	STP/RSTP/MSTP (IEEE 802.1D/w/s) Redundant Ring (O-Ring) with recovery time less than 10ms over 250 units TOS/Diffserv supported Quality of Service (802.1p) for real-time traffic VLAN (802.1Q) with VLAN tagging and GVRP supported IGMP Snooping for multicast filtering Port configuration, status, statistics, monitoring, security SNTP for synchronizing of clocks over network Support PTP Client (Precision Time Protocol) clock synchronization DHCP Server / Client support Port Trunk support MVR (Multicast VLAN Registration) support	
Network Redundancy	O-Ring Open-Ring O-RSTP STP RSTP MSTP	
Warning / Monitoring System	Relay output for fault event alarming (only for RES-3242GC-E) Syslog server / client to record and view events Include SMTP for event warning notification via email Event selection support	
LED Indicators		
Power indicator	Green for power on	Green : Power LED x 4
Status indicator	Green on for system ready	Green on for system ready
R.M. indicator	-	Green : Indicate system operated in O-Ring Master mode
O-Ring indicator	-	Green : Indicate system operated in O-Ring mode
Fault indicator	-	Amber : Indicate unexpected event occurred
10/100Base-T(X) RJ45 port indicator	Green at left for port Link/Act. Amber at right for 100Mbps link	Green at left for port Link/Act. Amber at right for 100Mbps link
1000Base-T(X) / Fiber port indicator	Green for port Link/Act	Green for port Link/Act
Fault contact		
Relay	-	Relay output to carry capacity of 1A at 24VDC
Power		
Redundant Input power	100~240VAC with power cord	100~240VAC with power cord and dual +12~+48 VDC or -12~-48 VDC inputs in 6-pin terminal block
Power consumption (Typ.)	18 Watts	
Overload current protection	Present	
Physical Characteristic		
Dimension (W x D x H)	443.7 (W) x 200 (D) x 44 (H) mm (17.47 x 7.88 x 1.73 inch)	
Weight (g)	2490 g	2590 g
Environmental		
Operating Temperature	-10 to 60°C (14 to 140°F)	-40 to 70°C (-40 to 158°F)
Operating Humidity	5% to 95% Non-condensing	
Regulatory approvals		
EMI	FCC Part 15, CISPR (EN55022) class A	
EMS	EN61000-4-2 (ESD), EN61000-4-3 (RS), EN61000-4-4 (EFT), EN61000-4-5 (Surge), EN61000-4-6 (CS), EN61000-4-8, EN61000-4-11	
Warranty	2 years	

Ordering Information

RES-3 **A** **A** **B** **C** **C** - **D**



Code Definition	10/100Base-T(X) Port Number	Additional Port Number	Additional Port Type	Model Type
Option	- 24: 24 ports	- 2: 2 ports	- GC : gigabit combo port	- E : enhanced model with dual DC inputs and -40 °C to 70 °C operating temperature

Available Model	Model Name	Description	Operating Temperature
	RES-3242GC_US	Industrial 26-port rack mount managed Ethernet switch with 24x10/100Base-T(X) and 2xGigabit combo ports, SFP socket, US power cord	-10 to 60°C
	RES-3242GC-EU	Industrial 26-port rack mount managed Ethernet switch with 24x10/100Base-T(X) and 2xGigabit combo ports, SFP socket, EU power cord	-10 to 60°C
	RES-3242GC-E_US	Industrial 26-port rack mount managed Ethernet switch with 24x10/100Base-T(X) and 2xGigabit combo ports, SFP socket, enhanced version, US power cord	-40 to 70°C
	RES-3242GC-E_EU	Industrial 26-port rack mount managed Ethernet switch with 24x10/100Base-T(X) and 2xGigabit combo ports, SFP socket, enhanced version, EU power cord	-40 to 70°C

Packing List

- RES-3422GC series x 1
- Rack-mount Kit x 1
- ORing Tool CD x 1
- Console Cable x 1
- Quick Installation Guide x 1

Optional Accessories

- Open-Vision M500 : Powerful Network Management Windows Utility Suit, 500 IP devices
- DR-75 series : 75 Watts DIN-Rail power supply (Only for -E)
- SFP 1G series : 1Gbps SFP optical transceiver
- DR-45 series : 45 Watts DIN-Rail power supply (Only for -E)
- DR-120 series : 120 Watts DIN-Rail power supply (Only for -E)