



IMG-111 Series

Industrial Cellular VPN Router with 1 x10/100Base-T(X) 1xRS-232 Gateway

Highlights

- Provide 1 x 10 / 100 Base -T(X) port and SIM card slot
- 2G or 3.5G HSUDPA modem included
- Support Open VPN, PPTP VPN
- Support DHCP forwarding through PPTP function.
- Update DNS Hostname: DDNS
- Versatile modes & event alarm by e-mail.
- Event warning by Syslog, Email, SNMP Trap, Relay output
- Redundant multiple host devices:
 - 5 host devices: Virtual COM, TCP Server, TCP Client mode; UDP
 - 4 IP Ranges: UDP
- 12~48VDC power input on terminal block
- Rigid IP-30 housing design
- Din-Rail and panel mounting enabled.



Introduction

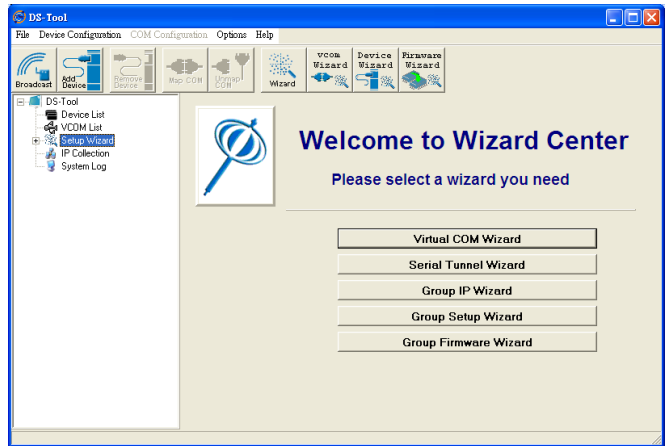
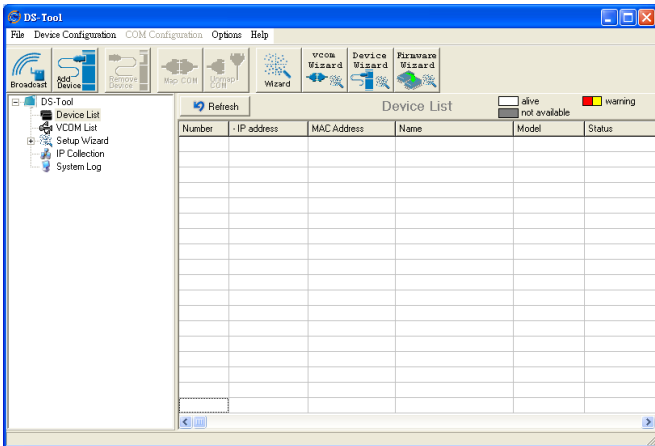
IMG-111 is an innovative 1 port RS232 VPN Gateway with 1 port 10/100Base-T(X) port. It could be configured to connect to the internet by dialing up 2G/3.5G cellular modem to fulfill demands of various applications rapidly. In addition, IMG-111 can also transfer data into 5 host PCs simultaneously for backup purposes. Therefore, IMG-111 is one of the best solutions for applications of wireless and serial communication.

Application

IMG-111 support 2G/3.5G HSUPA Modem dial up. The utility- M2M-Tool which is used to manage and monitor all of the serial ports on IMG-111.



M2M Gateway Connection



Monitoring and Configuration interface

Specifications

ORing M2M Model	IMG-111	IMG-111-2G
Physical Ports		
10/100 Base-T(X) Ports in RJ45 Auto MDI/MDIX		1
Sim card slot		1
Cellular Interface		
Cellular Standard	GSM / GPRS / EGPRS / EDGE / WCDMA / HSDPA / HSUPA	GSM / GPRS
Band options	Dual band : HSUPA 1900 / 2100 MHz Quad band : GSM / GPRS / EDGE 850 / 900 / 1800 / 1900 MHz / WCDMA / HSDPA 850 / 900 / 1900 / 2100MHz	Dual-band (Qual-band) GSM/GPRS 900/1800MHz or 900MHz/1800MHz/850MHz/1900MHz
Antenna Connector	Reverse SMA	
Antenna	GSM/DCS/UMT 3G antenna x1	
Serial Ports		
Connector	DB9 Male x 1	
Operation Mode	RS-232	
Serial Baud Rate	110 bps to 115.2 Kbps	
Data Bits	5, 6, 7, 8	
Parity	odd, even, none, mark, space	
Stop Bits	1, 1.5, 2	
Serial signals	RS-232 : TxD, RxD, GND	
LED Indicators		
Power indicator	Green On: Power is on and functioning Normally.	
Status indicator	Green : System status indicator	
Fault indicator	Amber on : WAN connection link down	
WAN	Green on : 2G/3.5G dial up Green blinking : 2G/3.5G disconnect	
Serial TX/RX LED	Red : Receiving data Green : Transmitting data	
10/100TX RJ45 port indicator	Green for port Link/Act.	
Fault Contac		

Relay	Relay output to carry capacity of 1A at 24VDC
Power	
Power input	12-48VDC power input on terminal block
Power consumption	4.5 Watts
Physical Characteristic	
Enclosure	IP-30
Dimension (W x D x H)	41 (W) x 70 (D) x 95 (H) mm (1.61 x 2.76 x 3.74 inch)
Weight (g)	360 g
Environmental	
Storage Temperature	-40 to 85°C (-40 to 185°F)
Operating Temperature	-10 to 60°C (14 to 140°F)
Operating Humidity	5% to 95% Non-condensing
Regulatory Approvals	
EMI	FCC Part 15, CISPR (EN55022) class A
EMS	EN61000-4-2 (ESD), EN61000-4-3 (RS), EN61000-4-4 (EFT), EN61000-4-5 (Surge), EN61000-4-6 (CS), EN61000-4-8, EN61000-4-11
Shock	IEC60068-2-27
Free Fall	IEC60068-2-32
Vibration	IEC60068-2-6
Safety	EN60950-1
Warranty	3 years

Ordering Information

IMG-ABC



Code Definition	Serial Port Type	Serial Port Number	Ethernet Port Number
Option	- 1: RS-232 only	- 1: 1 ports	- 1: 1 port

Available Model	Model Name	Description
	IMG-111	Industrial Cellular 3.5G VPN Gateway with 1 x10/100Base-T(X) 1xRS-232 Gateway
	IMG-111-2G	Industrial Cellular 2G VPN Gateway with 1 x10/100Base-T(X) 1xRS-232 Gateway

Packing List

- **IMG-111 x 1**
- **Wall-Mount Kit x 1**
- **CD x 1**
- **Din-Rail Kit x 1**
- **Quick Installation Guide x 1**