

# IDS-5611F

Industrial security 1-port RS232/422/485 to 1-port 100FX Device Server

## Highlights

- Data Security: SSL encryption
- Internet Community: PPPoE
- DNS Hostname: DDNS
- NAT-pass through: User can manage IDS-5611F through NAT router
- Redundant Power Inputs: 12~48VDC on power jack and terminal block
- Redundant multiple host devices: 5 simultaneous in Virtual COM, TCP Server, TCP Client mode, UDP
- Secured Management by HTTPS and SSH
- Management by Console
- Versatile Modes: Virtual Com, Serial Tunnel, TCP Server, TCP Client, UDP
- Event Warning by Syslog, Email, SNMP trap, and Beeper
- Various Windows O.S. supported: Windows NT/2000/ XP/ 2003/ VISTA 32 bits



## Features

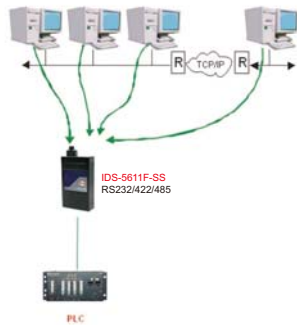
- Redundant 5 multiple host devices supported to protect your industrial network
- Versatile modes & event alarm by e-mail
- HTTPs & SSH protocol supported for secured management
- NAT router pass through
- Console command control
- SSL encryption for Security data transfer
- PPPoE for internet community
- DDNS for domain name service
- IP table to prevent access from unauthorized IP address
- Configurable by Web-based and Windows utility (DS-Tool)
- Dual redundant DC power inputs of terminal block and power jack
- Rigid IP-30 housing design
- DIN-Rail and panel mounting enabled

## Introduction

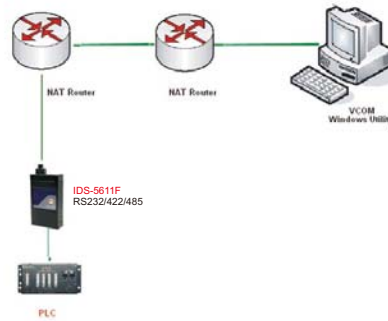
IDS-5611F is an innovative 1 port RS232/422/485 to 1 port fiber optical security device server. To assure the agility and security of critical data, IDS-5611F offers many powerful features for SW redundant functions. IDS-5611F can simultaneously transfer SSL encryption data into 5 host PCs. This feature can assure all critical data that saved in different host PC to avoid Ethernet break or host PCs failure. Secondly, the IDS-5611F provides dual redundant power inputs on DC power jack and terminal block. IDS-5611F also provides NAT pass through function so that users are able to manage IDS-5611F inside or outside the NAT router. It is easy for different IP domain users to use IDS-5611F. Therefore, IDS-5611F is one of the best security communication redundant solutions for current application of serial devices with fiber optical interface.

## DS-Tool

In practical operation of serial device servers, Windows utility (DS-Tool) is supported. This utility is very helpful for you to manage and monitor all of industrial device servers on the industrial network.



Redundancy 5 host devices

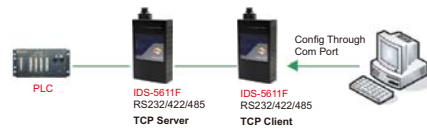


NAT router Pass Through

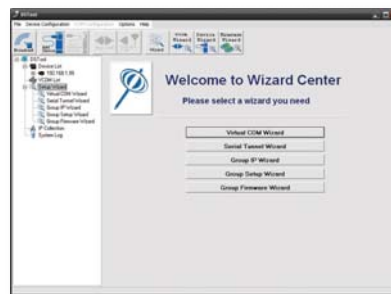
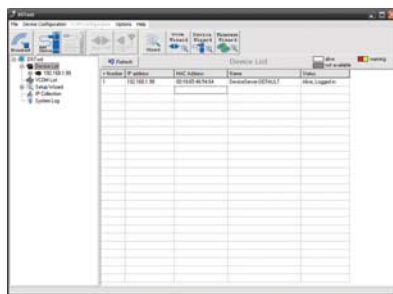


SSL Data Encryption

Connect through PPPoE / DDNS



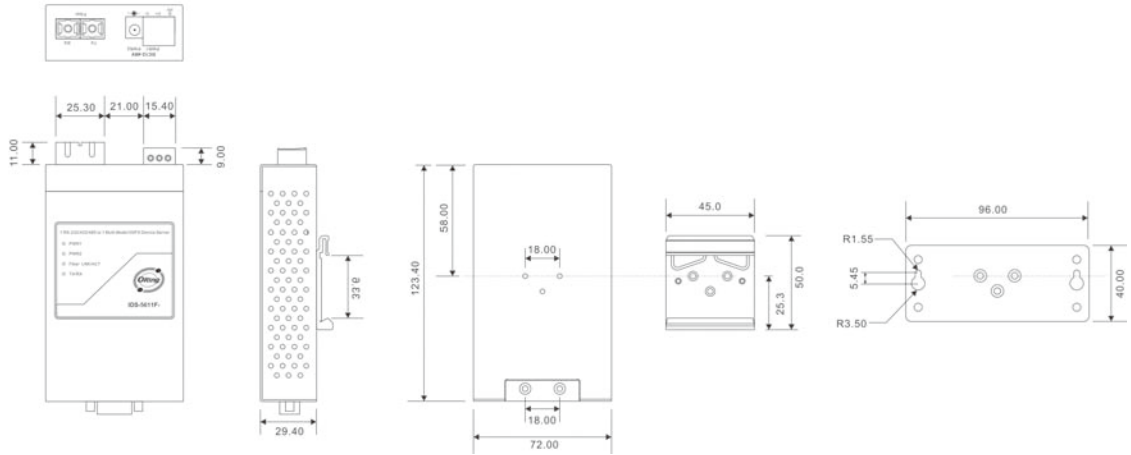
COM Port Command



Monitoring and Configuration interface

## Dimension

(Unit=mm)



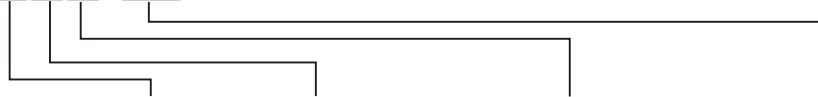
## Specifications

ORing Device Server Model	IDS-5611F-MM	IDS-5611F-SS
<b>Fiber Port</b>		
100Base-FX Multimode ports (2KM, 1310nm, SC connector)	1	
100Base-FX Singlemode ports (30KM, 1550nm, SC connector)		1
<b>Serial Ports</b>		
Connector	DB9 x 1	
Operation Mode	RS232 / RS422 / 4(2)-Wire RS485. Which can be configured by DS-Tool	
Serial Baud Rate	110 bps to 460.8 Kbps	
Data Bits	5, 6, 7, 8	
Parity	odd, even, none, mark, space	
Stop Bits	1, 1.5, 2	
RS-232	TxD, RxD, RTS, CTS, DTR, DSR, DCD, RI, GND	
RS-422	Tx+,Tx-, Rx+, Rx-,GND	
RS-485 (4-wire)	Tx+,Tx-, Rx+, Rx-,GND	
RS-485 (2-wire)	Data+, Data-,GND	
Flow Control	XON/XOFF, RTS/CTS, DTR/DSR	
<b>LED indicators</b>		
Power indicator	PWR 1(2) / Ready: Red On: Power is on and booting up. Red Blinking: Indicates an IP conflict, or DHCP or BOOTP server did not respond properly. Green On: Power is on and functioning Normally. Green Blinking: Located by Administrator.	
100Base-FX with SC connector	Green for port Link/Act at 100Mbps.	
Serial TX / RX LEDs:	Red: Serial port is receiving data Green: Serial port is transmitting data	
<b>Power</b>		
Redundant Input power	Dual DC inputs. 12-48VDC on 3-pin terminal block and power jack	
Power consumption (Typ.)	4 Watts	
Overload current protection	Present	
Reverse polarity protection	Present on terminal block	

Physical Characteristic	
Enclosure	IP-30
Dimension (W x D x H)	72(W)x100(D)x31(H) mm (2.83x3.94x1.22 inch.)
Weight (g)	325 g
Environmental	
Storage Temperature	-40 to 85°C (-40 to 185°F)
Operating Temperature	-10 to 60°C (14 to 140°F)
Operating Humidity	5% to 95% Non-condensing
Regulatory approvals	
EMI	FCC Part 15, CISPR (EN55022) class A
EMS	EN61000-4-2 (ESD), EN61000-4-3 (RS), EN61000-4-4 (EFT), EN61000-4-5 (Surge), EN61000-4-6 (CS), EN61000-4-8, EN61000-4-11
Shock	IEC60068-2-27
Free Fall	IEC60068-2-32
Vibration	IEC60068-2-6
Safety	EN60950
Warranty	5 years

### Ordering Information

**IDS-56 ABC-DD**



Code Definition	Serial Port Number	Ethernet Port Number	Fiber Port Identification	Fiber Optical Mode
<b>Option</b>	<b>- 01: 1 ports</b>	<b>- 1: 1 port</b>	<b>- F: 100FX</b> <b>- "" : 10/100TX</b>	<b>- MM: Multi-mode Fiber</b> <b>- SS: Single-mode Fiber</b>

	Model Name	Description
Available Model	IDS-5611F-MM	Industrial security 1-port RS232/422/485 to 1-port multi-mode fiber Device Server
	IDS-5611F-SS	Industrial security 1-port RS232/422/485 to 1-port single-mode fiber Device Server