



# IMG-W1321+

Industrial 3.5G M2M Gateway with IEEE802.11 b/g,  
1x10/100Base-T(X) PoE P.D. and 2xRS-232/422/485

## Highlights

**Preliminary**

- Provide 1x10/100 Base-T(X) port with PoE P.D.
- 3.5G HSUDPA modem included
- Provide 2xRS-232/422/485 serial ports
- Support Open VPN, PPTP VPN
- High Speed Air Connectivity: WLAN interface support up to 54Mbps link speed
- Highly Security Capability: WEP/WPA/WPA-PSK(TKIP,AES)/WPA2 / WPA2-PSK (TKIP, AES) / 802.1x / Radius supported
- Event warning by Syslog, Email, SNMP Trap.
- Versatile modes with redundant multiple host devices:  
5 host devices: Virtual COM, TCP Server, TCP Client mode;  
4 IP ranges: UDP
- 12~48VDC power input on M12 connector.
- IP-67 grade waterproof casing

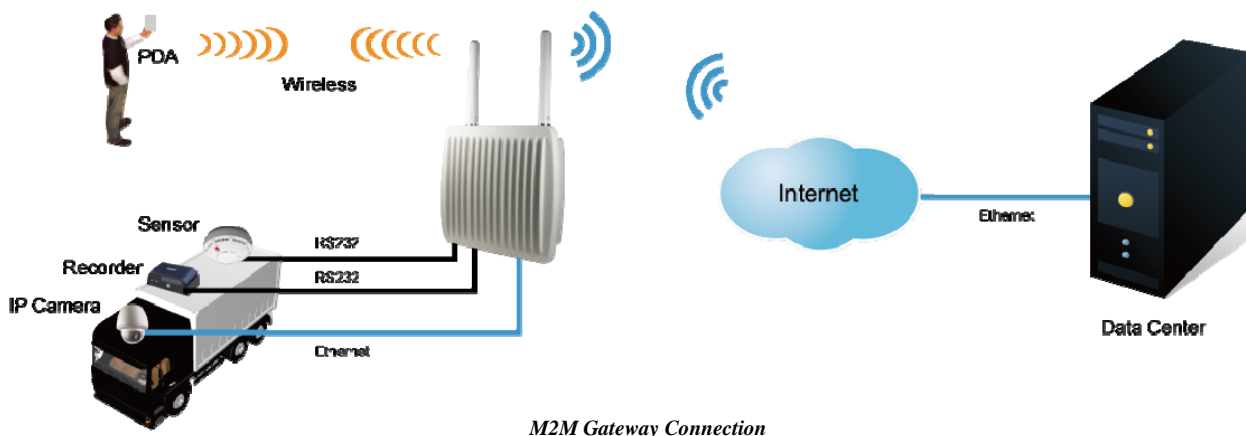


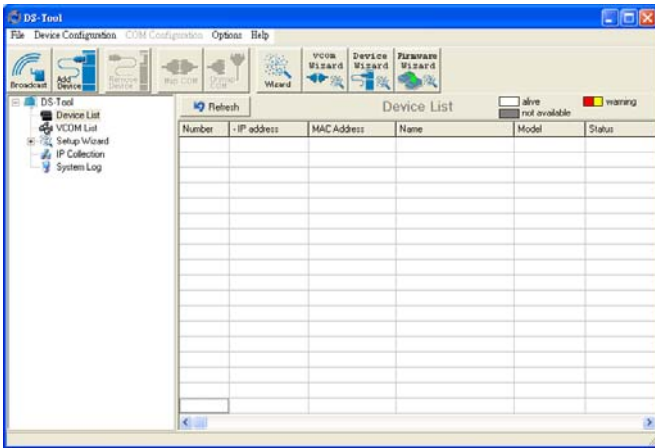
## Introduction

IMG-W1321+ is an innovative 1 port RS232/422/485 and IEEE802.11 b/g WLAN Access Point VPN gateway with 1 port 10/100Base-T(X) ports. It could be configured to connect to the internet by dialing up 3.5G cellular modem to fulfill demands of various applications rapidly and construct the WLAN environment. In addition, IMG-W1321+ can also transfer SSL encryption data into 5 host PCs simultaneously for backup purposes. Therefore, IMG-W1321+ is one of the best solutions for applications of wireless and serial communication.

## Application

IMG-W1321+, it support 3.5G HSUPA Modem dial up. The utility-DS-Tool which is used to manage and monitor all of the serial ports on IMG-W1321+.





Monitoring and Configuration interface

## Specifications

ORing M2M Model	IMG-W1321+
<b>Physical Ports</b>	
10/100 Base-T(X) Ports in RJ45 Auto MDI/MDIX with PoE P.D.	1 (4-pin M12 D-coding connector)
SIM card slot	1
<b>Cellular interface</b>	
Cellular Standard	GSM / GPRS / EGPRS / EDGE / WCDMA / HSDPA / HSUPA
Band options	Dual band : HSUDPA 1900 / 2100 MHz Quad band : GSM / GPRS / EDGE 850 / 900 / 1800 / 1900 MHz / WCDMA / HSDPA 850 / 900 / 1900 / 2100MHz
Antenna Connector	N-type Female
Antenna	GSM/DCS/UMT 3G antenna x1
<b>WLAN Feature</b>	
Antenna Connector	N-type Female
Antenna	Wi-Fi ANT x1
Radio Frequency Type	DSSS
Modulation	IEEE802.11b: CCK, DQPSK, DBPSK IEEE802.11g: OFDM with BPSK, QPSK, 16QAM, 64QAM
Frequency Band	America/FCC: 2.412~2.462 GHz (11 channels) Europe CE/ETSI: 2.412~2.472 GHz (13 channels)
Transmission Rate	IEEE802.11b: 1/ 2/ 5.5/ 11 Mbps IEEE802.11g: 6/ 9/ 12/ 18/ 24/ 36/ 48/ 54 Mbps
Transmit Power	IEEE802.11b/g: 18dBm
Receiver Sensitivity	-81dBm @ 11Mbps, PER< 8% -64dBm @ 54Mbps, PER< 10%
Encryption Security	WEP: (64-bit ,128-bit key supported) WPA/WPA2 : 802.11i(WEP and AES encryption) WPAPSK (256-bit key pre-shared key supported) 802.1X and Radius supported TKIP encryption
Wireless Security	SSID broadcast disable
<b>Serial Ports</b>	

Connector	2 (8-pin M12 A-coding connector)
Operation Mode	RS-232/RS-422/RS-485(2W/4W)
Serial Baud Rate	110 bps to 115.2 Kbps
Data Bits	5, 6, 7, 8
Parity	odd, even, none, mark, space
Stop Bits	1, 1.5, 2
Serial signals	RS-232 : TxD, RxD, DCD, RTS, CTS, DSR, DTR, GND RS-422 : TX+, TX-, RX+, RX-, GND RS-485 (2W): D+, D-, GND RS-485 (4W): TX+, TX-, RX+, RX-, GND
<b>LED Indicators</b>	
Power indicator	Green On: Power is on and functioning Normally.
10/100TX RJ45 port indicator	Green for port Link/Act.
WLAN indicator	WLAN Link /ACT: Green: Link
<b>Power</b>	
Power Input	12-48VDC on 5-pin M12(A-coding) connector
Power consumption (Typ.)	6.5 Watts
Overload current protection	Present
Reverse polarity protection	Present on 5-pin M12(A-coding) connector
<b>Physical Characteristic</b>	
Enclosure	IP-67
Dimension (W x D x H)	257 (W) x 91 (D) x 227 (H) (8.5 x 3.0 x 7.5 inch)
Weight (g)	2450 g
<b>Environmental</b>	
Storage Temperature	-40 to 85°C (-40 to 185°F)
Operating Temperature	-20 to 70°C (-4 to 158°F)
Operating Humidity	5% to 95% Non-condensing
<b>Regulatory Approvals</b>	
EMI	FCC Part 15, CISPR (EN55022) class A
EMS	EN61000-4-2 (ESD), EN61000-4-3 (RS), EN61000-4-4 (EFT), EN61000-4-5 (Surge), EN61000-4-6 (CS), EN61000-4-8, EN61000-4-11
Shock	IEC60068-2-27
Free Fall	IEC60068-2-32
Vibration	IEC60068-2-6
Safety	EN60950-1
<b>Warranty</b>	3 years

## Ordering Information

IMG-W **A** **B** **C** **D** +

Code Definition	WLAN Identification	Serial Port Type	Serial Port Number	Ethernet Port Number	PoE Identification
Option	- 1: IEEE802.11 b/g mode	- 1: RS-232 only - 2: RS-422/485 only - 3: Support RS-232/422/485	- 2: 2 port	- 1: 1 port	- +: PoE P.D. supported

	Model Name	Description
Available Model	IMG-W1321+_US	Industrial 3.5G M2M Gateway with IEEE802.11 b/g, 1x10/100Base-T(X) PoE P.D. and 2xRS-232/422/485, US band
	IMG-W1321+_EU	Industrial 3.5G M2M Gateway with IEEE802.11 b/g, 1x10/100Base-T(X) PoE P.D. and 2xRS-232/422/485, EU band