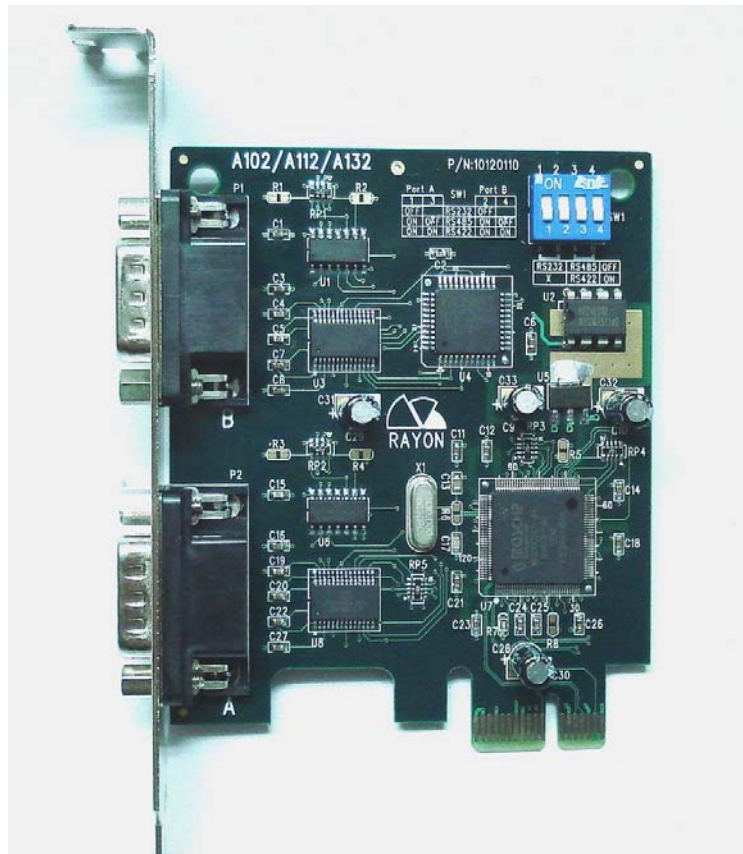


A112 PCI Express Card

PCIe Bus Two Port Card

RS232/RS422/RS485 selectable



- ★ Each port can set to RS232/RS422/RS485
- ★ Easy to set by DIP Switch
- ★ Support ADDC feature in RS485
- ★ Suitable for industrial control
- ★ Suitable for Windows 2000/XP
- ★ Suitable for Vista & WIN7
- ★ Suitable for Linux

A112 Specification :

Serial Communication Controller :

*type : Moschip MCS9922.

Hardware compatibility :

*PCIe bus slot.

Software compatibility :

- * Windows 2000/XP.
- * Windows Vista.
- * WIN7.
- * Linux.
- * Other operating system

Dimension :

- * A112 card: 75 * 90 mm.
- * A112 model with standard PCIe bracket.

System I/O & IRQ mapping :

- *I/O mapping assigned by PCI BIOS.
- *Memory mapping assigned by PCI BIOS.
- *two IRQ mapping assigned by PCI BIOS.

Port capability :

- *number of port : 2 ports per card.
- *Interface : RS232/RS422/RS485
Note: Each port can set to RS232/RS422/RS485 by DIP switch.
- *Baud Rate : each port can be configured to 50--115200bps.
- *Connector type: DB9 male connector.

Environment :

- *operating temperature : 0°C to 55°C
- *operating humidity : 10% to 95% RH
- *storage temperature : 0°C to 65°C
- *storage humidity : 5% to 95% RH

Performance upgrade capability and relative products :

- *A102I : PCIe card support two Ground isolated RS232 ports.
- *A132 : PCIe card support two RS422/RS485 ports.
- *A102 : PCIe card support two RS232 ports.
- *A104 : PCIe card support four RS232 ports.
- *A134 : PCIe card support four RS422/RS485 ports.
- *A114 : PCIe card support four RS232/RS422/RS485 ports.
- *A168 : PCIe card support eight RS232 ports.

***All names are the trademarks of their respective organization.



RAYON TECHNOLOGY CO., LTD.

2F, No. 177, Chung-Shan 2 Rd., Lu-Chou city, Taipei Hsien, Taiwan.

TEL: 886-2-82858362 FAX: 886-2-82857065

E-Mail: rayon@ms1.hinet.net

WEB: <http://www.computex.com.tw/rayon>

WEB: <http://www.rayontech.com>