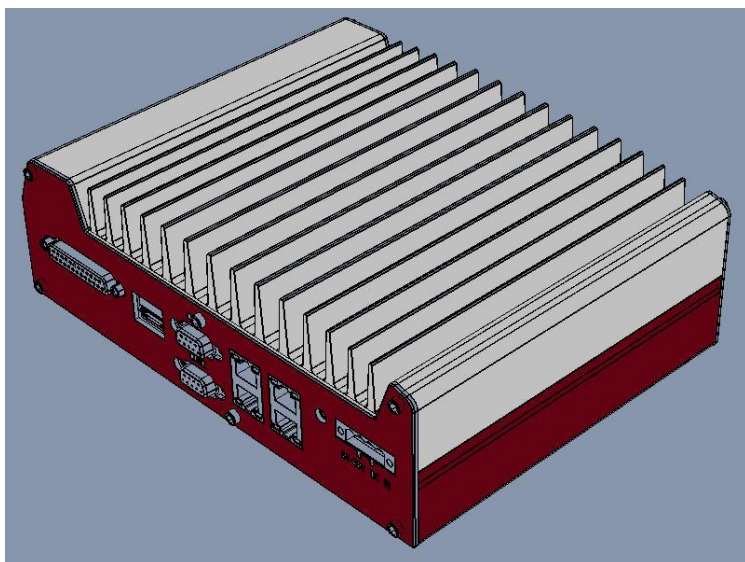


EC-3000 Series

Intel® Core™ i7/i5 Fanless Embedded Controller with 5x GbE and 2x eSATA ports



Features

- Intel® Core™ i7/i5 processor + HM55 PCH
- Rugged, -20°C to +60°C fanless operation
- Up to five Intel® 82574L Gigabit Ethernet ports
- VGA+DVI/HDMI dual display
- One RS-232 ports and one RS-232/422/485 port
- Six USB 2.0 ports
- Dual eSATA ports
- Supports AT/ATX power mode and PXE / WOL (wakeup on LAN)

Introduction

Boosting your computing engine to a new era! Incorporating Intel Core™ i7/i5 processor, Vecow EC-3000 controller offers extraordinary performance for arithmetic-intensive applications, while its fanless design provides superb reliability and durability.

EC-3000 integrates versatile I/O interfaces in a compact chassis. It provides up to 5 Gigabit Ethernet ports and 2 eSATA ports, which are particularly useful for surveillance and security applications. The VGA+DVI/HDMI dual display accomplishes an easy way of high-resolution content output for image or media applications. In addition, EC-3000 also features additional options, such as isolated DIO, PCI-104 bus expansion and mini-PCIe, to fit a broader range of applications.

The fanless design of EC-3000 gives it exceptional long-term durability and tolerance to vibration,

and its innovative technology of adaptive power-on sequence control provides a more reliable operation in an environment with temperature variation. For a quest of performance and reliability, EC-3000 is the answer!

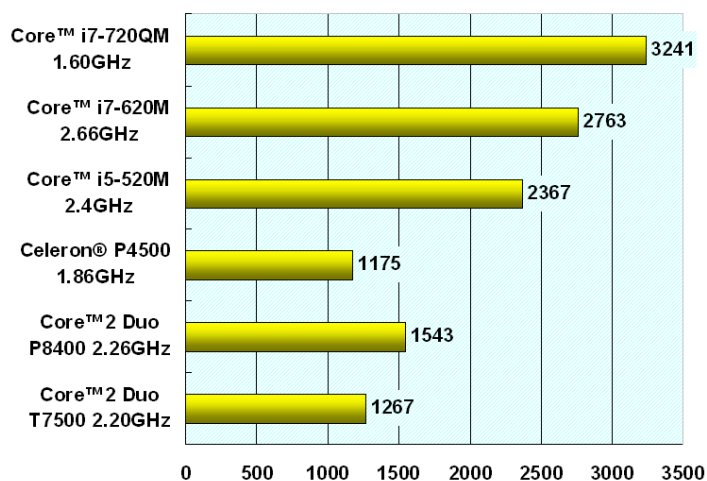
Application

- Surveillance and security application
- AOI system
- Medical imaging system
- Industrial automation
- Digital signage

Product Highlights

- **Performance Advantage**

Taking advantage of the latest processor technologies, EC-3000 inherits remarkable features introduced to Intel Core™ i7/i5 platform, such as new 32nm micro-architecture, Turbo Boost and Hyper-Threading (2 cores/4 threads). The result is nearly twice the computing performance of previous Core™2 Duo platform. In addition, the new, integrated Intel® HD Graphics engine also doubles the graphics performance.



* According to CPU Benchmark by PassMark® (<http://www.passmark.com>)

- **5x Intel® 82574L Gigabit Ethernet controller**

The extraordinary computing power of EC-3000 is suitable for image-related applications such as AOI and surveillance security. In these applications, GbE camera is an import device to acquire high-resolution images. EC-3000 provides up to five Gigabit Ethernet ports using Intel® 82574L controllers so you can get adequate connections and great compatibility with cameras.

- **Optional on-board isolated DIO and PCI-104 expansion**

For applications need additional functionality, options can be applied to EC-3000. The on-board isolated digital input/output is a good fit for industrial control. And PCI-104 expansion allows you to install any PCI-104 module inside so you can have a compact, rugged platform for a wider range of applications.

Specifications

| System Core | |
|--------------------------|---|
| Processor | Intel® Core™ i7-620M (2.66 GHz), i5-520M (2.4 GHz) or P4500 (1.86 GHz) processor |
| Chipset | Intel® HM55 Platform Controller Hub |
| Graphics | Integrated Intel® HD Graphics Controller |
| Memory | 1x 204-pin SO-DIMM socket, up to 4GB DDR3 1066MHz SDRAM |
| I/O Interface | |
| Ethernet | Up to 5x Intel® 82574L GbE ports |
| Video Port | 1x DB-15 connector for analog RGB 1x DVI-D connector for DVI or HDMI output |
| Serial Port | 1x software-programmable RS-232/422/485 (COM1) 1x RS-232 (COM2) |
| USB | 6x USB 2.0 ports |
| KB/MS | 1x PS/2 keyboard and 1x PS/2 mouse |
| Audio | 1x Mic-in and 1x Speaker-out |
| Digital I/O | 8x isolated DI and 8x isolated DO (optional) |
| Storage Interface | |
| SATA HDD | 1x Internal SATA port for 2.5" HDD/SSD installation |
| eSATA | 2x eSATA ports for storage expansion |
| CompactFlash | 1x Type I CF socket |
| Expansion Bus | |
| PCI-104 | 1x Internal PCI-104 socket (optional) |
| Mini PCI-E | 1x internal mini PCI Express socket with USIM support (optional) |
| Power Supply | |
| DC Input | Built-in 8~28 VDC DC input |
| Input Connector | 1x 4-pin pluggable terminal block with remote on/off control 1x DC jack (ø2.5) for AC/DC adapter input |
| Mechanical | |
| Dimension | 230 mm (W) x 175 mm (D) x 74 mm (H) |
| Weight | TBD |
| Mounting | Wall-mount by mounting bracket |
| Environmental | |
| Operating Temperature | -20°C ~ 60°C (TBD) |
| Storage Temperature | -40°C ~85°C |
| Humidity | 10%~90% , non-condensing |
| Vibration | Operating, 5 Grms, 5-500 Hz, 3 Axes (w/ SSD) |
| Shock | Operating, 50 Grms, Half-sine 11 ms Duration (w/ SSD) |

Order Information

- **EC-3000-5G**
Fanless controller with 5x GbE, 2x eSATA
- **EC-3000-3G**
Fanless controller with 3x GbE, 2x eSATA
- **EC-3000-5G620M**
Intel Core i7-620M fanless controller with 5x GbE, 2x eSATA, pre-installed 2GB DDR3 and 250GB HDD
- **EC-3000-3G520M**
Intel Core i5-520M fanless controller with 3x GbE, 2x eSATA, pre-installed 2GB DDR3 and 250GB HDD
- **EC-3000-3G4500**
Intel Celeron P4500 fanless controller with 3x GbE, 2x eSATA, pre-installed 2GB DDR3 and 250GB HDD